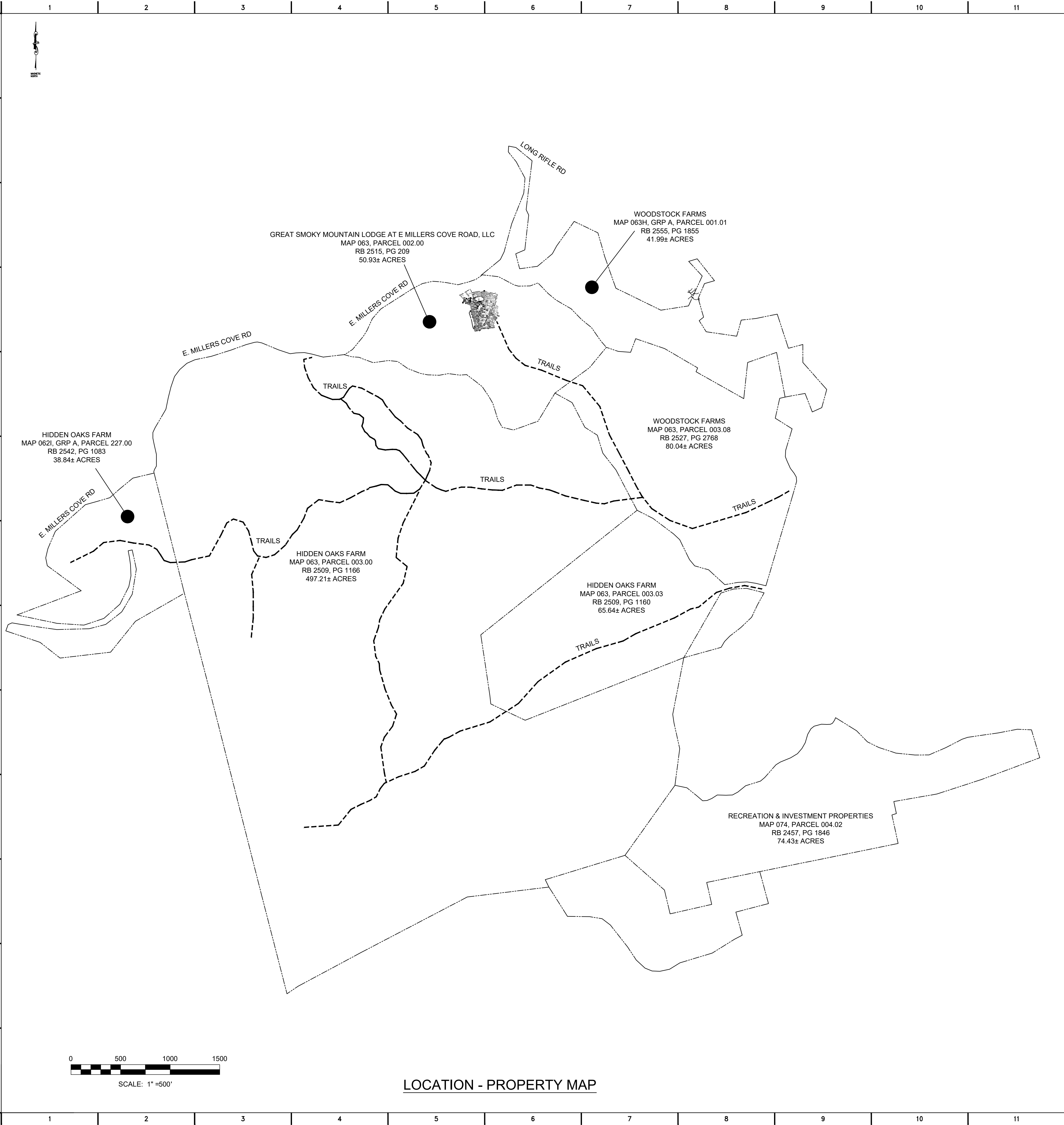


W:\projects\Adventure ORX Tennessee, LLC\S49.01 - Bronco Off-Roadec\04-Survey\EXISTING CONDITIONS SURVEY.dwg - Plotted: November 16, 2023 4:11 PM By: Randy White



LOCATION - PROPERTY MAP

LEGEND

- UTILITY POLE
- LIGHT POLE
- LANDSCAPE LIGHT
- GUY
- ELECTRIC PULL BOX
- GAS METER
- CLEANOUT
- DOWNSPOUT
- CATCH BASINS
- SIGN
- BOLLARD
- TREE
- INDEX CONTOUR
- INTERMEDIATE CONTOUR
- STORM SEWER LINE
- HDPE
- HIGH DENSITY POLYETHYLENE
- OVERHEAD POWER LINE
- ELECTRIC LINE
- B.M.

GENERAL NOTES

1. SURVEY IS IN COMPLIANCE WITH CURRENT TENNESSEE MINIMUM STANDARDS OF PRACTICE.
2. INFORMATION SHOWN ON THIS DRAWING ILLUSTRATES THE EXISTING CONDITIONS ON 10-14-23.
3. UTILITY NOTE: THE SURVEYOR IS NOT RESPONSIBLE FOR ANY DETERMINATION OR LOCATION OF ANY UNDERGROUND CONDITIONS NOT VISIBLE AND INCLUDING, BUT NOT LIMITED TO, SOILS, GEOLOGICAL CONDITIONS, PHYSICAL DEVICES AND FACILITIES, PIPELINES OR BURIED CABLES AND SHALL NOT BE RESPONSIBLE FOR ANY LIABILITY THAT MAY ARISE OUT OF THE MAKING OF OR FAILURE TO MAKE SUCH DETERMINATION OR LOCATION OF ANY SUBSURFACE CONDITION. FOR UNDERGROUND UTILITY LOCATION CALL 811 (TENNESSEE ONE CALL)
5. THIS IS A TOPOGRAPHIC SURVEY ONLY - BOUNDARY SURVEY NOT PERFORMED BY C2RL ENGINEERS. PROPERTY LINE SHOWN TAKEN FROM DEED OF RECORD - LOCATION
6. COORDINATES AND ELEVATIONS ARE NOT TIED TO TENNESSEE GRID (MAGNETIC NORTH)

CERTIFICATE OF ACCURACY:
I CERTIFY THAT THIS SURVEY MEETS OR EXCEEDS THE REQUIREMENTS OF A CATEGORY I SURVEY AND THAT THE RATIO OF PRECISION OF THE ORIGINAL FIELD MEASUREMENTS IS BETTER THAN 1:10,000.

REGISTERED LAND SURVEYOR
RANDALL R. WHITE
TENN. REG. NO. 2446
DATE OF SURVEY 10-14-23

C2RL, INC
engineers

240 W. Bessemer Street - Alcoa, TN. 37701
Ph. (865) 980-3500

DATE:

REVISIONS:

BRONCO OFF-ROADEO
BLOUNT COUNTY, TN

ADVENTURE ORX TENNESSEE, LLC
DEARBORN, MI

PROPERTY MAP

JOB NO:

DATE:

DRAWN: RRW

CHECKED: RRW

S.2

SHEET NO.