

ARCHITECT



TAG	KEYNOTE TEXT
00-001	ASPHALT ROOFING SHINGLES CLASS C RATING PER ASTM E 99 MIN. 12 YLL. COLOR AND MANUF. TO BE SELECTED BY OWNER.
07-002	ALUMINUM DOWNSPOUT (04); COLOR TO MATCH EXTERIOR FINISH.
07-003	5" PREFINISHED ALUMINUM GUTTER - COLOR DARK BRONZE. TO BE SELECTED BY OWNER.
09-004	FIBERCEMENT SIDING - HARVEY HANK SMOOTH FINISH. COLOR TO BE SELECTED BY OWNER.
09-013	1" X 6" ALL WOODS DOCKS WITH 1" FIBERCEMENT TRIM BOARD. HARDIE TRIM BOARD TO BE PAINTED DARK BRONZE AGAINST WHITE AGAINST DARK BRONZE SIDING.

Office:
 8300 Mason Highway
 Atlanta, GA 30606

DEVELOPER
HILLPOINTE

Corporate Office
 1015 Peachtree Avenue, Unit 211
 Atlanta, GA 30309
 PH (404) 752-5004

Operations Office
 8300 Mason Highway
 Building 300
 Atlanta, GA 30606
 PH (404) 752-5004
 Information www.hillpointe.com

24-HOUR CONTACT:
 Hillpointe
 1700 Peachtree Street
 Atlanta, GA 30309
 P (770) 254-3351
 Email: mmadower@hillpointe.com

PROJECT
POINTE GRAND APARTMENTS

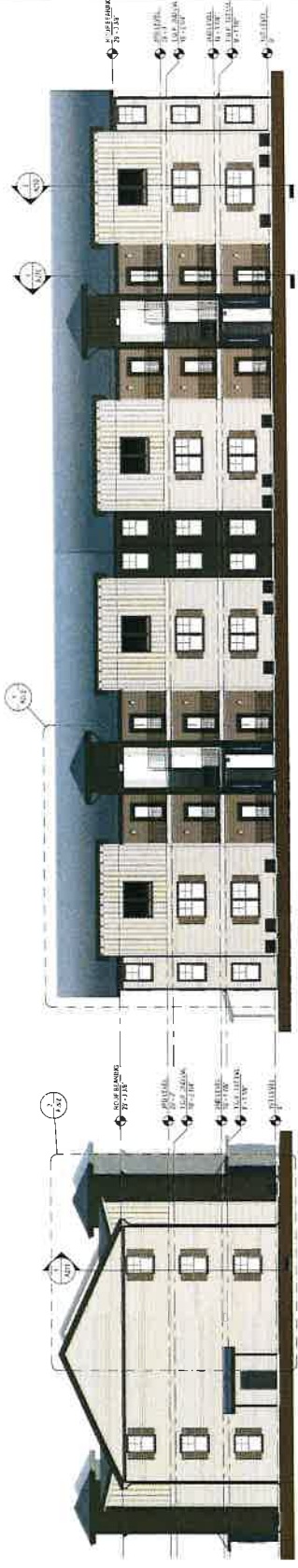
ANY CITY, GEORGIA

ARCHITECT
 KSH 202520
 SHEET TITLE
24 UNIT BUILDING - EXTERIOR ELEVATIONS

ARCHITECT SEAL

DRAWING DATE: 03/03/25
 PRE-DEV. SET - 24 UNIT BUILDING - 03/03/25

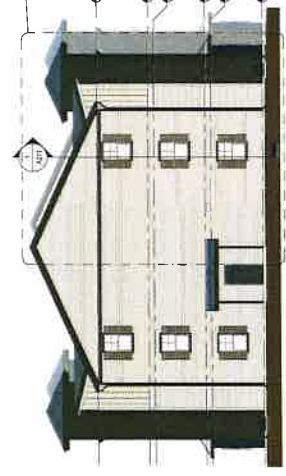
SHEET: **A201**



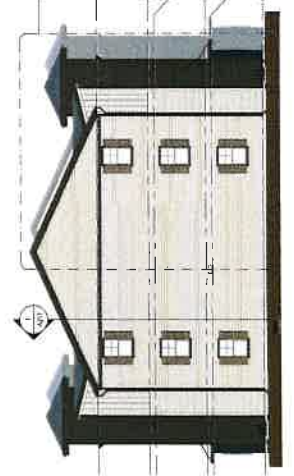
2. 24 UNIT BUILDING - REAR ELEVATION



1. 24 UNIT BUILDING - FRONT ELEVATION



4. 24 UNIT BUILDING - RIGHT ELEVATION



3. 24 UNIT BUILDING - LEFT ELEVATION

ARCHITECT	KEYNOTES	KEYNOTE TEXT



Office:
8530 Mason Highway
Atlanta, GA 30658

DEVELOPER
HILLPOINTE
Corporate Office:
10 South New York Avenue Unit 211
Atlanta, GA 30306
PH (407) 752-9004

Operations Office:
8150 Mason Highway
Building 300
Atlanta, GA 30606
PH (407) 752-9004
Information www.hillpointe.com

24-HOUR CONTACT:
Mason Hillpointe
P (706) 254-8351
Email mwh@hillpointe.com

PROJECT
**POINTE GRAND
APARTMENTS**

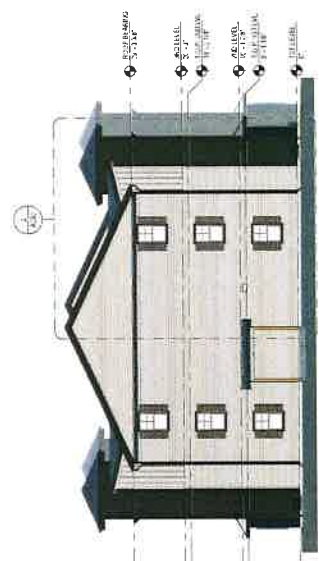
ANY CITY GEORGIA

RSH# 202500
SHEET TITLE
**36 UNIT
BUILDING -
EXTERIOR
ELEVATIONS**

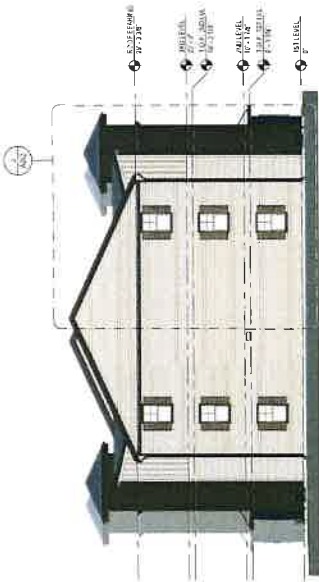
ARCHITECT SEAL

DRAWING DATE 03/03/25
**PRE-DEV SET - 36 UNIT
BUILDING - 03/03/25**

SHEET: **A201**



36 UNIT BUILDING - RIGHT ELEVATION
SCALE 1/16"



36 UNIT BUILDING - LEFT ELEVATION
SCALE 1/16"



36 UNIT BUILDING - REAR ELEVATION
SCALE 1/16"



36 UNIT BUILDING - FRONT ELEVATION
SCALE 1/16"

ARCHITECT



Office:
6330 Mason Highway
Building
Atlanta, GA 30306

DEVELOPER
HILLPOINTE

Corporate Office:
101 South New York Avenue Unit 211
Atlanta, GA 30309
PH: (407) 752-9004

Operations Office:
6330 Mason Highway
Atlanta, GA 30306
PH: (407) 752-9004
Information: www.hillpointe.com

24-HOUR CONTACT:
Marcus Meadows
mmeadows@hillpointe.com
Email: mmeadows@hillpointe.com

PROJECT

**POINTE GRAND
APARTMENTS**

ANY CITY, GEORGIA

KSH 202500

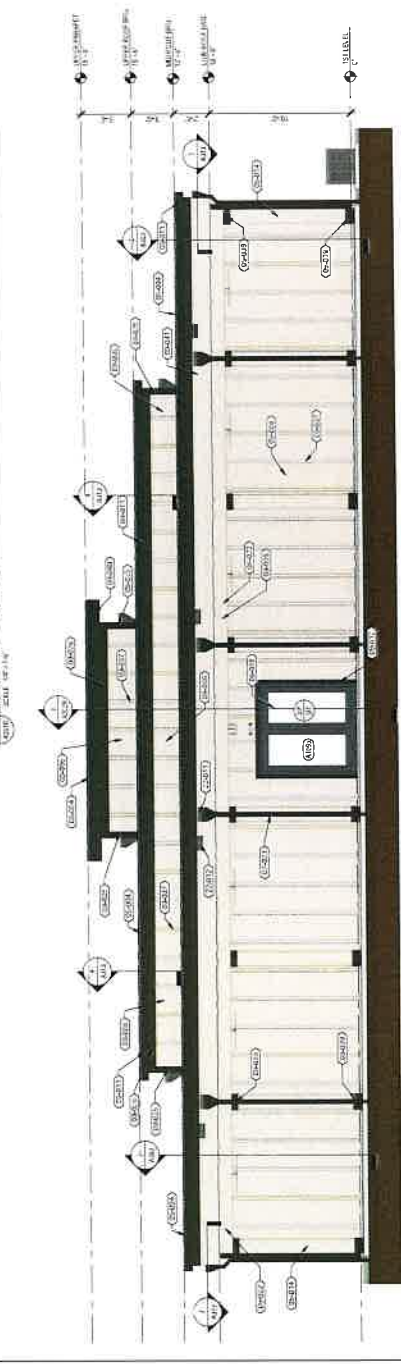
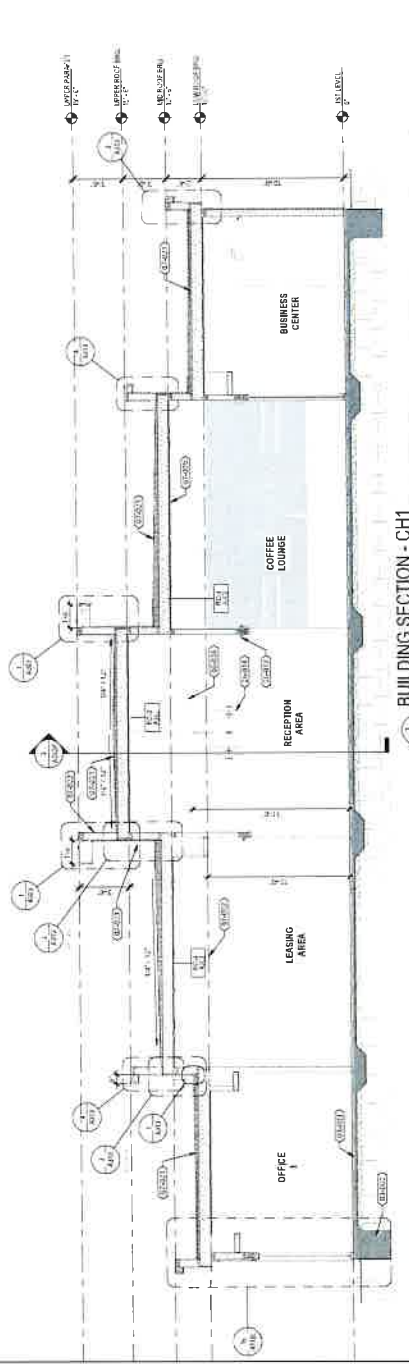
SHEET TITLE
**CLUBHOUSE -
ELEVATIONS &
SECTIONS**

ARCHITECT SEAL

DRAWING DATE: 03/03/25
**PRE-DEV. SET -
CLUBHOUSE - 03/03/25**

SHEET: **A201R**

TAG	REVISIONS	REVISION TEXT
01-402		FLOORING CONSTRUCTION, REFER TO FLOORING TYPE ON A-202.
03-402		FOUNDATION REFER TO STRUCTURAL FOR CONCRETE SLAB SMOOTH FINISH ON 10 MIL VAPOR BARRIER WITH SEAMS LAPPED 6" MIN. OVER COMPACTED SUBGRADE.
05-404		ALL EXTERIOR WALLS WITH SLOPED TOP AND DRIP EDGES. COLOR DARK BRONZE TO BE SELECTED BY OWNER.
06-414		BUILT UP WOOD CEILING W/ 1" HARDI SIDES RE STRUCTURAL.
06-422		WOOD BEAM W/ HARDI TRIM FINISH ON ALL SIDES RE STRUCTURAL.
06-438		DECORATIVE WOOD TRUSS' COLOR AND DESIGN TO BE DETERMINED BY ARCHITECT. PROVIDE DAM AT EAVES TO ALLOW AIR FLOW.
07-405		INSULATION BOARD SYSTEM ON TYPICAL ROOF DECKING. RE STRUCTURAL.
07-421		TPO ROOF MEMBRANE SYSTEM ATTACHED TO ROOF DECKING. RE STRUCTURAL.
07-422		TPO ROOF MEMBRANE SYSTEM ATTACHED TO WALL BREATHING.
07-423		ALUMINUM STOREFRONT SYSTEM (DARK BRONZE). SEE STOREFRONT ELEVATIONS FOR DETAILS. (S-202) PAINTED WHITE.
08-010		FIBERCEMENT SIDING - HARDIE PANEL SMOOTH. 4" X 12" SPACED AND EXPOSED.
09-405		FIBERCEMENT TRIM BOARD FASCIA 1x8 HARDIE TRIM SMOOTH. PAINTED, DARK BRONZE.
09-406		FIBERCEMENT TRIM BOARD FASCIA 1x8 SMOOTH. 1x8 PAINTED, DARK BRONZE.
09-411		FIBERCEMENT TRIM BOARD FASCIA 1x8 SMOOTH. 1x8 PAINTED, DARK BRONZE.
09-412		FIBERCEMENT TRIM BOARD FASCIA 1x8 SMOOTH. 1x8 PAINTED, DARK BRONZE.
09-415		FIBERCEMENT TRIM BOARD FASCIA 1x8 SMOOTH. 1x8 PAINTED, DARK BRONZE.
09-423		FIBERCEMENT TRIM BOARD FASCIA 1x8 SMOOTH. 1x8 PAINTED, DARK BRONZE.
09-426		FIBERCEMENT TRIM BOARD FASCIA 1x8 SMOOTH. 1x8 PAINTED, DARK BRONZE.
09-434		HARDI TRIM SMOOTH. PAINTED, DARK BRONZE.
09-437		HARDI TRIM SMOOTH. PAINTED, DARK BRONZE.
09-438		FIBERCEMENT TRIM BOARD FASCIA 1x8 SMOOTH. 1x8 PAINTED, DARK BRONZE.
09-440		FIBERCEMENT TRIM BOARD FASCIA 1x8 SMOOTH. 1x8 PAINTED, DARK BRONZE.
09-441		FIBERCEMENT TRIM BOARD FASCIA 1x8 SMOOTH. 1x8 PAINTED, DARK BRONZE.
12-011		ROOF SCUPPER - 4" X 12" (SC-12) METAL (ROOF SLOPES TOWARD DRAIN).
12-012		EMERGENCY OVER-LOW SCUPPER (ROOF SCUPPER).
12-013		EMERGENCY LIGHTS W/ BATTERY BACKUP (RE ELECTRICAL).
12-014		EMERGENCY LIGHTS W/ BATTERY BACKUP (RE ELECTRICAL).



CLUBHOUSE - FRONT ELEVATION

SCALE: 1/8" = 1'-0"



Office:
2535 Macson Highway
Building 300
Atlanta, GA 30606

DEVELOPER
HILLPOINTE

Corporate Office:
101 South Main Street, Suite 211
Wheat Park, FL 32769
PH (407) 752-9804

Operations Office:
850 Macson Highway
Building 300
Atlanta, GA 30606
PH (407) 752-9804

Information: www.hillpointe.com

24-HOUR CONTACT:
P (706) 254-4351
E-mail: mrees@hillpointe.com

PROJECT

POINTE GRAND APARTMENTS

ANY CITY, GEORGIA

KSJM 201509

SHEET TITLE

CLUBHOUSE - ELEVATIONS & SECTIONS

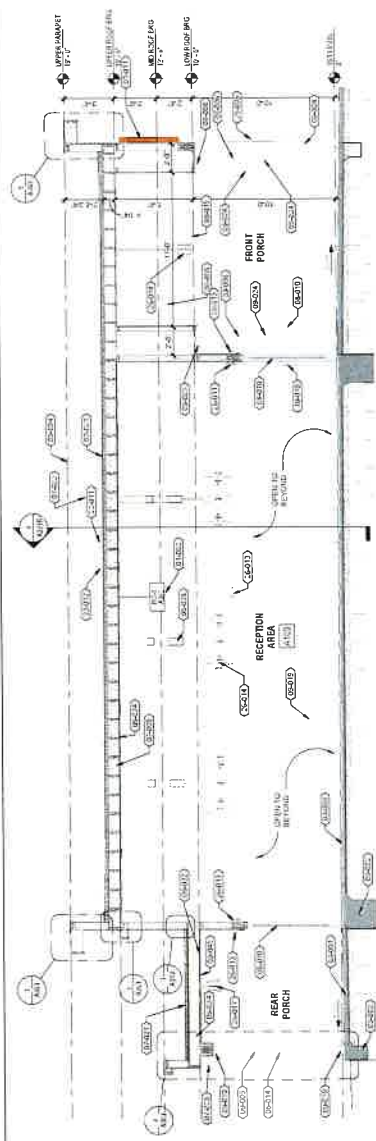
ARCHITECT SEAL

DRAWING DATE: 03/03/25

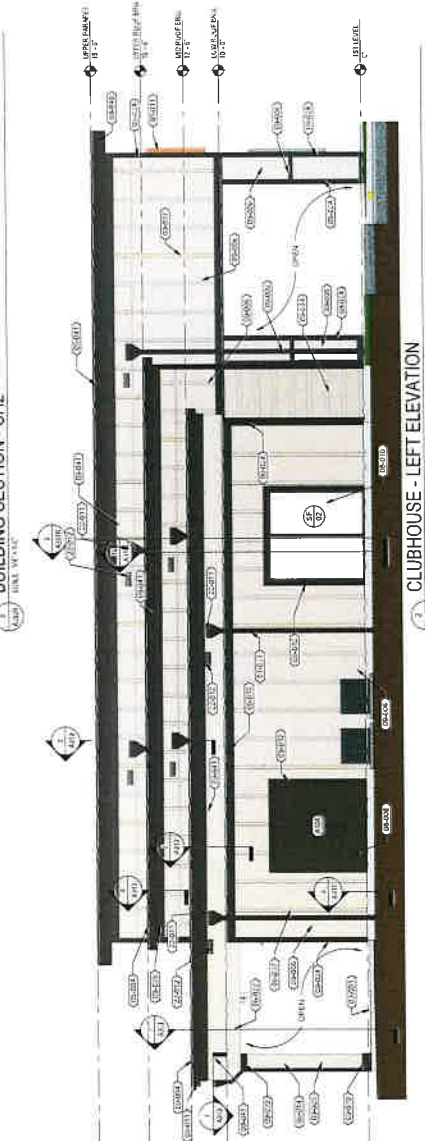
PRE-DEV SET -
CLUBHOUSE - 03/03/25

SHEET: A202R

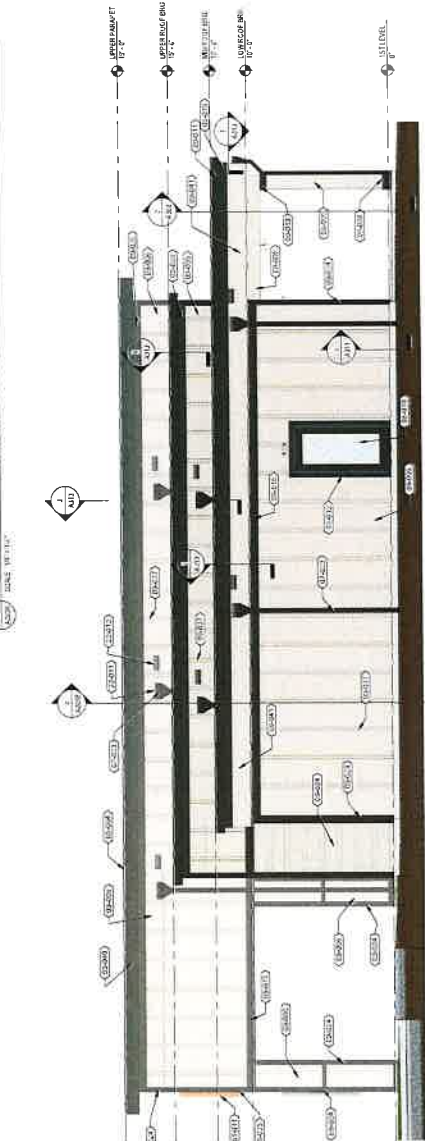
TAG	REVISION/TEXT
01-002	FLOOR/CEILING CONSTRUCTION. REFER TO BUILDING SURFACE BY CONSTRUCTION TYPE OR AS32
01-011	ROOFING: REFER TO ARCHITECTURAL DRAWINGS FROM BUILDING. RE STRUCTURAL FOR REINFORCING AND REINFORCING
03-002	FOUNDATION: REFER TO STRUCTURAL FOR DETAILS
03-003	FOUNDATION: REFER TO STRUCTURAL FOR DETAILS
05-004	ALUMINUM WALL CAP WITH SLOPED TOP AND DRIP GUTTER. COLOR: DARK BRONZE. TO BE SELECTED BY OWNER
05-014	BUILT UP WOOD COLUMN W/ 1/2" HARDI FINISH SEE DETAILS
05-022	WOOD BEAM W/ HARDI TRIM FINISH ON ALL SIDES. RE 2" X 10" WOOD JOISTS @ 16" O.C. RE 8" TRUCUL DOWNS. DECORATIVE WOOD TRUSS. COLOR AND DESIGN TO BE SELECTED BY OWNER
06-001	ROOFING: REFER TO ARCHITECTURAL DRAWINGS FOR DETAILS
07-005	R-38 FIBERGLASS ATTIC INSULATION. PROVIDE DAM AT TPO ROOF MEMBRANE SYSTEM ON TAPERED INSULATION BOARD (SLOPE 1/4" FT MIN. TOWARD ROOF SCUPPERS) ATTACHED TO ROOF DECKING. RE 1/2" X 1/2" WOOD JOISTS @ 16" O.C. RE 8" TRUCUL DOWNS. COLOR: DARK BRONZE. TO BE SELECTED BY OWNER
07-021	TPO ROOF MEMBRANE SYSTEM ON TAPERED INSULATION BOARD (SLOPE 1/4" FT MIN. TOWARD ROOF SCUPPERS) ATTACHED TO ROOF DECKING. RE 1/2" X 1/2" WOOD JOISTS @ 16" O.C. RE 8" TRUCUL DOWNS. COLOR: DARK BRONZE. TO BE SELECTED BY OWNER
07-022	TPO ROOF MEMBRANE SYSTEM ON TAPERED INSULATION BOARD (SLOPE 1/4" FT MIN. TOWARD ROOF SCUPPERS) ATTACHED TO ROOF DECKING. RE 1/2" X 1/2" WOOD JOISTS @ 16" O.C. RE 8" TRUCUL DOWNS. COLOR: DARK BRONZE. TO BE SELECTED BY OWNER
07-023	ALUMINUM DOWNSPOUT W/ COLLECTOR HEAD (O/S) - COLOR TO MATCH UPPER PANEL. OUTWING COLOR: PAINTED DARK BRONZE
08-001	ALUMINUM STOREFRONT SYSTEM (DARK BRONZE). SEE STOREFRONT ELEVATIONS
09-005	FIBERCEMENT SIDING - HARDIE PANEL SMOOTH. 4" X 10" MAX. PANEL. NO EXPOSED VERTICAL JOINTS. PAINTED DARK BRONZE
09-006	FIBERCEMENT SIDING - HARDIE PANEL SMOOTH. 4" X 10" MAX. PANEL. NO EXPOSED VERTICAL JOINTS. PAINTED DARK BRONZE
09-008	FIBERCEMENT TRIM BOARD - HARDIE TRIM SMOOTH. 1/2" X 4" PAINTED WHITE
09-011	FIBERCEMENT TRIM BOARD - HARDIE TRIM SMOOTH. 1/2" X 4" PAINTED WHITE
09-012	FIBERCEMENT TRIM BOARD - HARDIE TRIM SMOOTH. 1/2" X 4" PAINTED WHITE
09-015	FIBERCEMENT SIDING - HARDIE PANEL SMOOTH. 4" X 10" MAX. PANEL. NO EXPOSED VERTICAL JOINTS. PAINTED DARK BRONZE
09-018	PAINTED GYPSUM WALL. FINISH & COLOR TO BE SELECTED BY OWNER
09-024	FIBERCEMENT TRIM BOARD - HARDIE TRIM SMOOTH. 1/2" X 4" PAINTED WHITE
09-025	FIBERCEMENT TRIM BOARD - HARDIE TRIM SMOOTH. 1/2" X 4" PAINTED DARK BRONZE
09-026	FIBERCEMENT TRIM BOARD - HARDIE TRIM SMOOTH. 1/2" X 4" PAINTED DARK BRONZE
09-032	FIBERCEMENT TRIM BOARD - HARDIE TRIM SMOOTH. 1/2" X 4" PAINTED DARK BRONZE. COVER JOINTS WITH BATTENS IN 4'-4" PATTERN. PAINT TO MATCH PANEL
09-034	FIBERCEMENT SIDING - ALTERATIONS: HARDIE BLANK SIDING W/ 1/2" REPEATED PATTERN
09-037	HARDI SMOOTH BATTEN BOARD (2 1/2" X 4") AT 12" O.C. ALIGNED TO CORNER JOINTS. PAINT TO MATCH PANEL
09-039	FIBERCEMENT TRIM BOARD - HARDIE TRIM SMOOTH. 1/2" X 4" PAINTED DARK BRONZE
09-040	FIBERCEMENT TRIM BOARD - HARDIE TRIM SMOOTH. 1/2" X 4" PAINTED DARK BRONZE
09-041	FIBERCEMENT TRIM BOARD - HARDIE TRIM SMOOTH. 1/2" X 4" PAINTED DARK BRONZE
09-046	ARCHITECTURAL BATTEN BOARD (2 1/2" X 4") @ ALL JOINTS. PRIME PAINT COLOR: DARK BRONZE
10-010	FIRE EXTINGUISHER CABINET (RECESSED) SEE LIFE SAFETY LEGEND NOTES
22-011	EMERGENCY OVERFLOW SCUPPER - 4" X 12" (O/S-12) METAL. 1/2" MIN. MAX. ABOVE ROOF SCUPPER
26-008	EXTERIOR BUILDING LIGHTING (TO BE SELECTED BY OWNER)
26-011	LED EXTERIOR LIGHTING (TO BE SELECTED BY OWNER)
26-013	EMERGENCY LIGHTS W/ BATTERY BACKUP. RE ELECTRICAL
26-014	PENDANT LIGHT FIXTURE. REFER TO INTERIOR DESIGN
26-017	LIGHT FIXTURE. RE ELECTRICAL



BUILDING SECTION - CH2



CLUBHOUSE - LEFT ELEVATION



CLUBHOUSE - RIGHT ELEVATION





