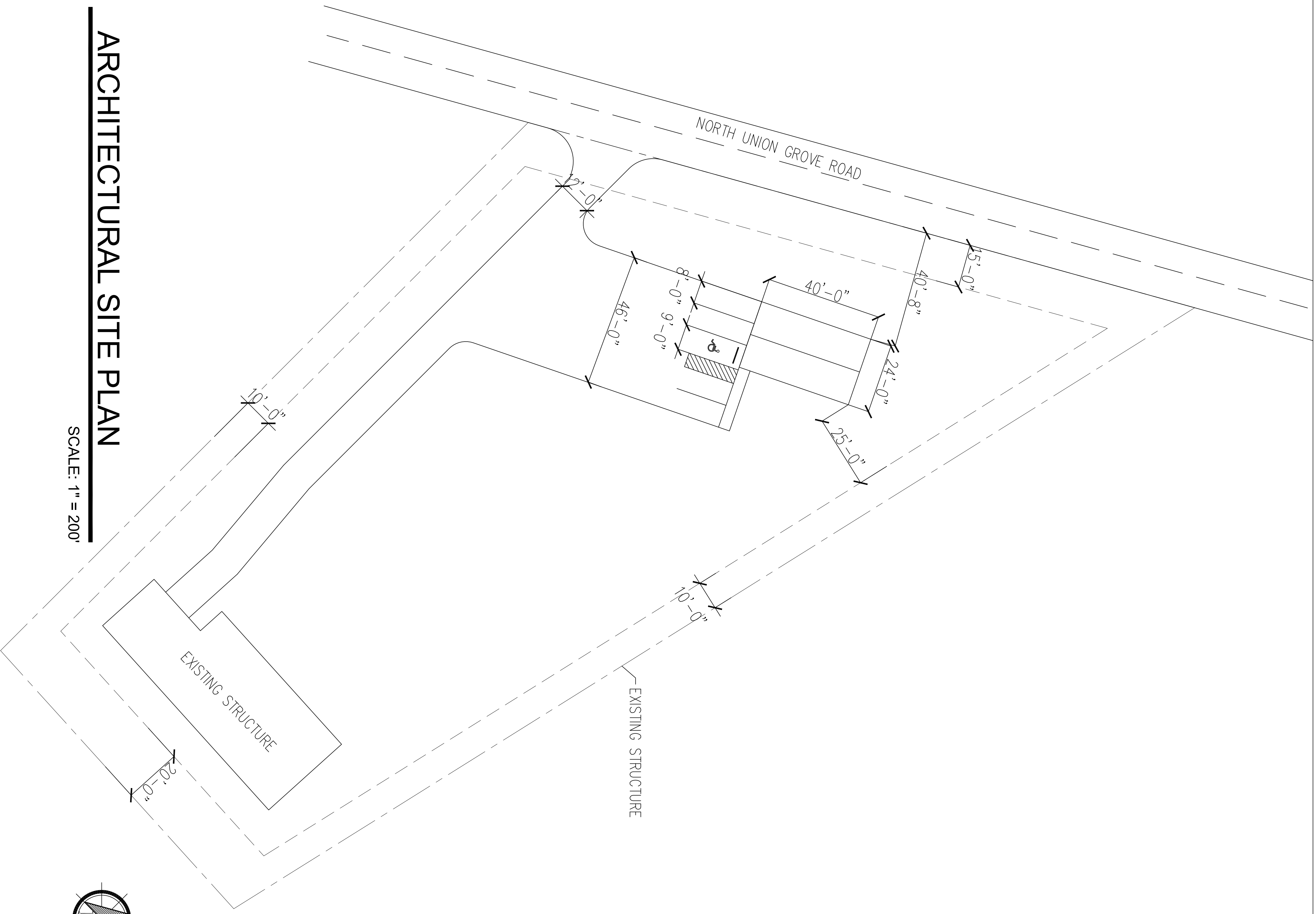




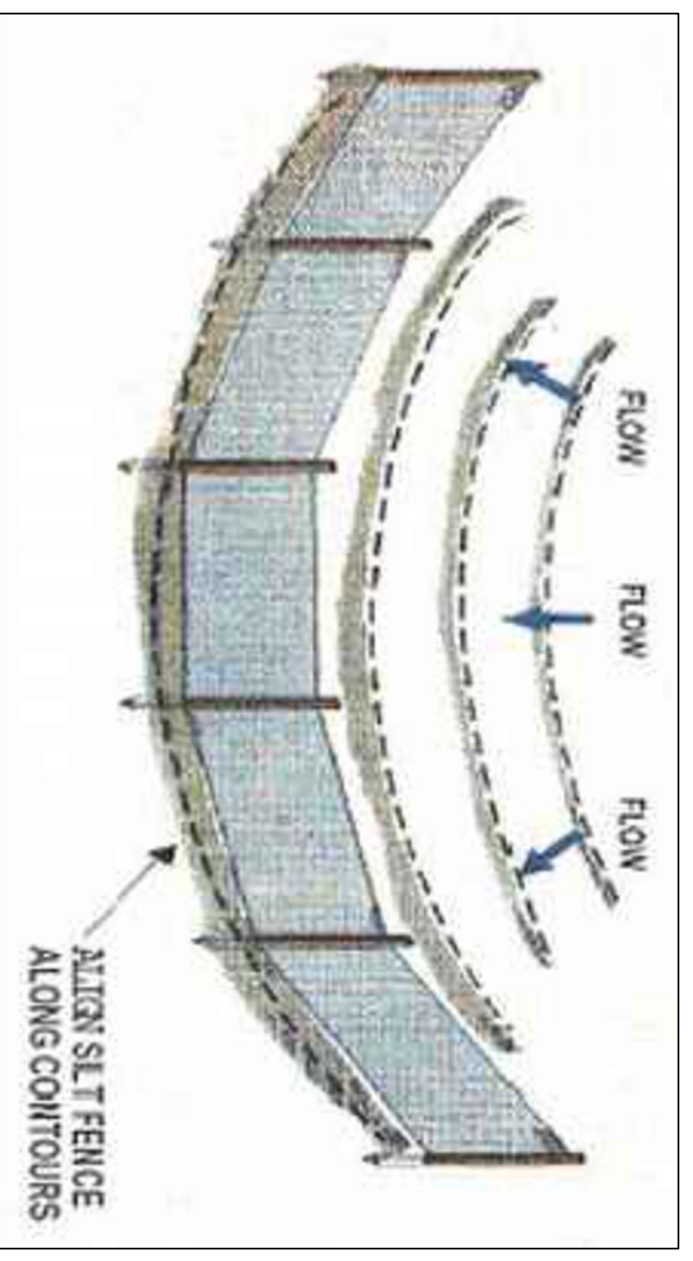
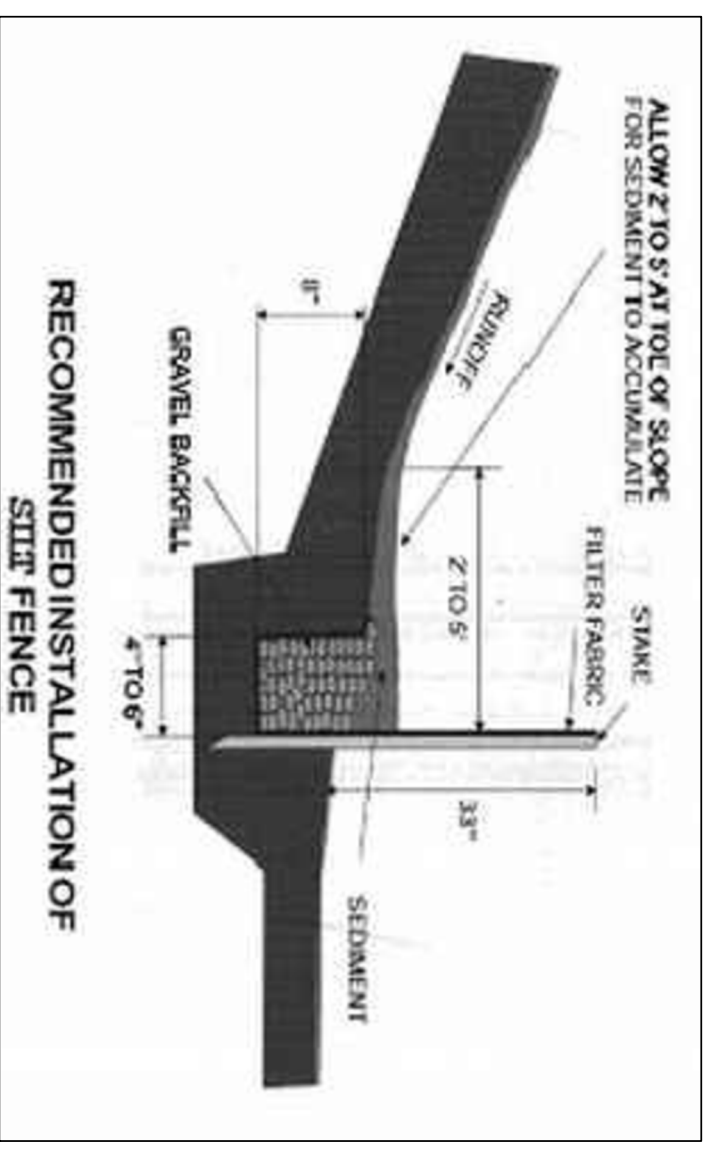
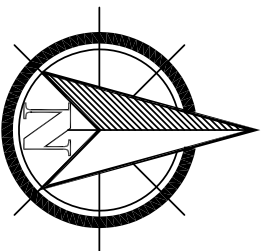
### SITE MAP

NTS



### ARCHITECTURAL SITE PLAN

SCALE: 1" = 200'



**DEBBIE BOYD BUILDING**  
**836 NORTH UNION GROVE ROAD**

FRIENDSVILLE

TENNESSEE 37737

VIRGINIA OFFICE  
 180 MOUNTAIN VIEW LN  
 N. TAZEWELL, VA 24640  
 Direct: 540.536.8389

TENNESSEE OFFICE  
 602 OAK HILL S PKWY  
 GREENSVILLE, TN 37743  
 Direct: 540.556.8389

REVISIONS	
REV	DESCRIPTION

DATE	10-18-2024
PROJECT #	TBD
DESIGNER	
CHECK BY	

ALL REPORTS, PLANS, SPECIFICATIONS, AND DOCUMENTS INCLUDING ALL PROFESSIONAL ASSESSMENTS, OF THE DESIGN PROFESSIONAL, WITHOUT PRIOR CONSENT OF THE DESIGN PROFESSIONAL, SHALL BE VOID AND INVALID. ANY REVISIONS OR OTHER CHANGES SHALL BE MADE SPECIFICALLY AND INDICATED AS SUCH.

S SITE PLAN BASE ON DATA FROM THE TN GIS WEBSITE AND CUSTOMER INFORMATION

AS1

ARCHITECTURAL  
 SITE PLAN



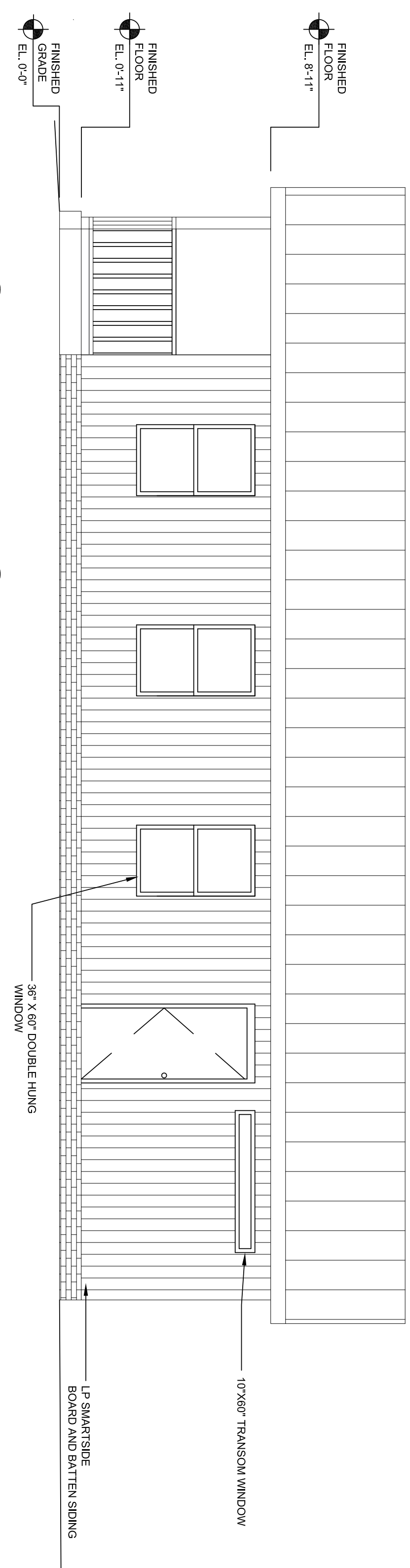
REV	DATE	DESCRIPTION

DATE	07/25/23
PROJECT #	TBD
DRAWN BY	GRINSSO, JT
CHECK BY	

ALTERNATE TRANS SPECIFICATIONS  
FOR THE DEBBIE BOYD BUILDING  
PROJECT. THIS DOCUMENT IS THE PROPERTY OF  
THE DESIGN PROFESSIONAL AND IS TO BE USED  
ONLY FOR THE PROJECT AND SITE SPECIFICALLY  
IDENTIFIED. IT IS NOT TO BE REPRODUCED,  
COPIED, OR TRANSMITTED IN ANY FORM OR  
BY ANY MEANS, WITHOUT THE WRITTEN  
CONSENT OF THE DESIGN PROFESSIONAL.  
OTHERWISE, ANY REUSE IS PROHIBITED.

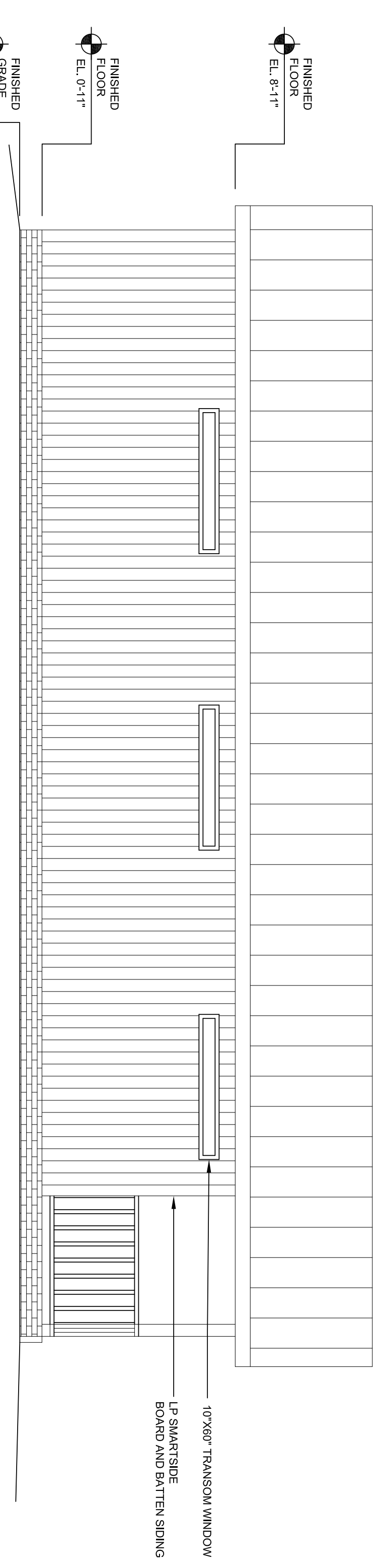
ELEVATIONS

A1



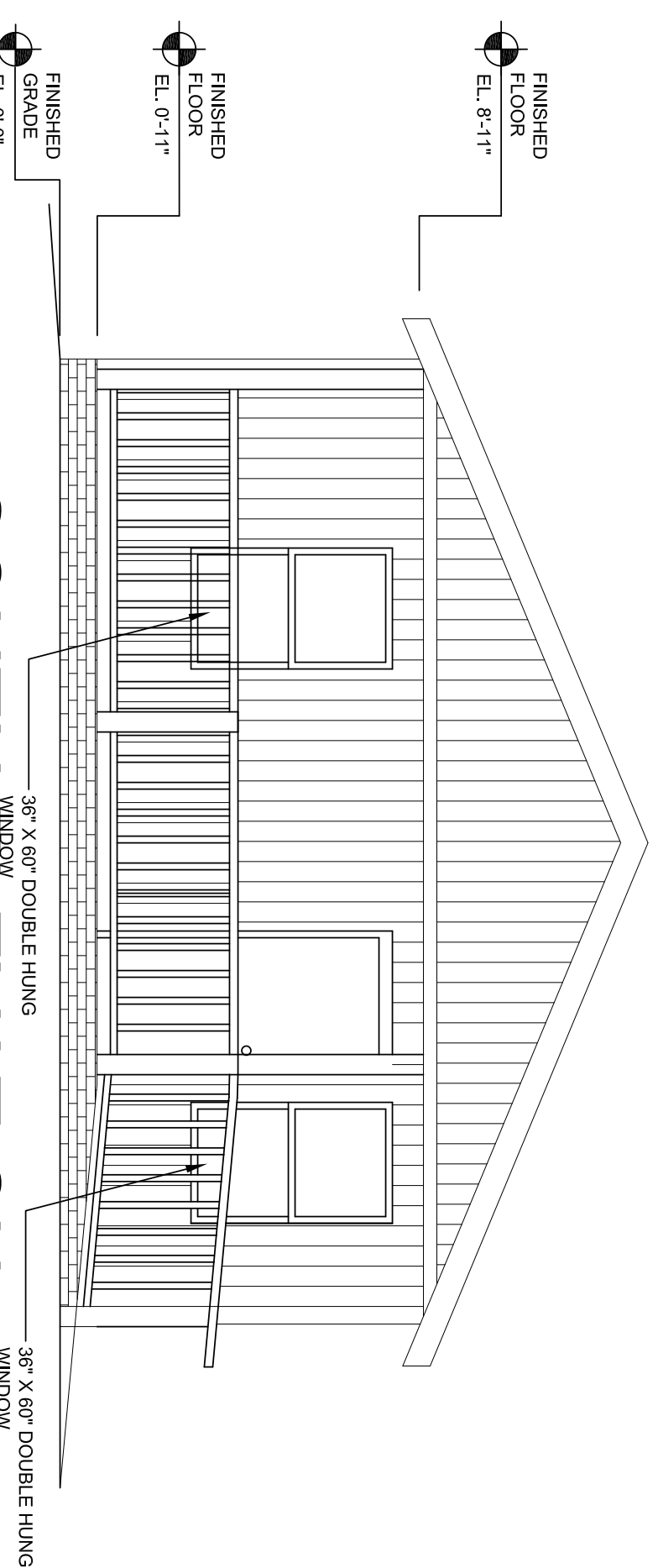
**EAST ELEVATION**

SCALE: 1/4" = 1'-0"



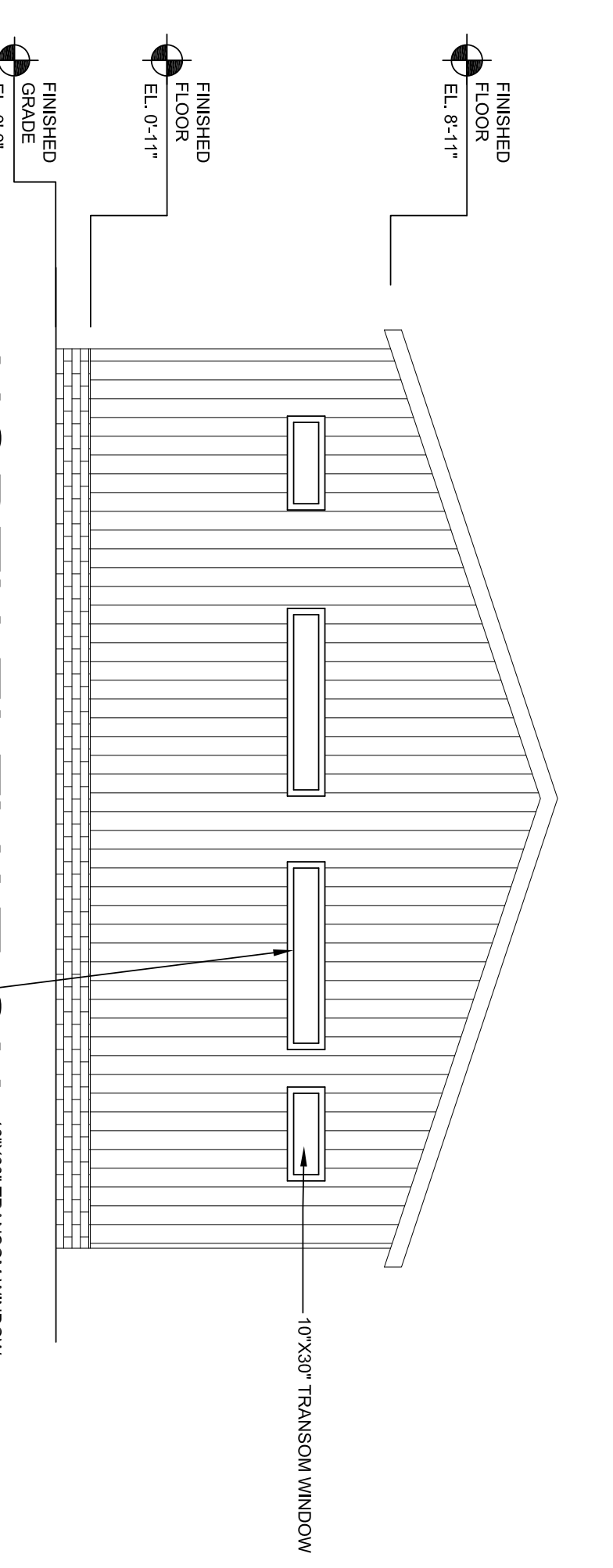
**WEST ELEVATION**

SCALE: 1/4" = 1'-0"



**SOUTH ELEVATION**

SCALE: 1/4" = 1'-0"



**NORTH ELEVATION**

SCALE: 1/4" = 1'-0"