

# 411 Restaurant & Tobacco Store

## Sam Patel

5022 US HWY 411, Maryville, Tennessee, 37801

### OWNER

Sam Patel  
Shyam Dutt Inc.  
103 Brick Mill Road Maryville, TN 37801

Contact: Sam Patel  
Phone: (856)-870-3735  
Email: brickmillmkt@gmail.com

### ARCHITECT

oysk<sup>3</sup> Architects  
1545 Western Avenue, Suite 100  
Knoxville, TN 37921  
Contact: Steve Young  
Phone: (865) 523-8200  
Email: office@oysk3architects.com

### CIVIL ENGINEER

Abbie Jones Consulting  
Contact: Abbie Jones  
Phone: (859)-559-3443  
Email: abbie@abbie-jones.com

### ELECTRICAL ENGINEER

Hampton Engineers, LLC  
Contact: Harvey Hampton  
Phone: (865)-360-3624  
Email: email@server.com

### MECHANICAL ENGINEER

Knauss Engineering and Design  
703 Nance Ferry Rd. Blaine, TN 37721  
Contact: Greg Knauss  
Phone: (865) 740-3361  
Email: gknauss@comcast.net

### STRUCTURAL ENGINEER

Smith Engineering Solutions  
Contact: Ryan Smith  
Phone: (865) 742-6738  
Email: ryan@smithengineeringsolutions.com

### CONTRACTOR

Company Name  
Company Street Address  
City, State, Zip code  
Contact: Name  
Phone: (###) ###-####  
Email: email@server.com

### ABBREVIATIONS

AB	ANCHOR BOLT	INSUL	INSULATION
A/C	AIR CONDITIONING	INT	INTERIOR
ACT	ACOUSTICAL CEILING TILE	JST	JOIST
AFF	ABOVE FINISHED FLOOR	MFR	MANUFACTURER
ALUM	ALUMINUM	MAX	MAXIMUM
ANCH	ANCHOR	MECH	MECHANICAL
AHJ	AUTHORITY HAVING JURISDICTION	MIN	MINIMUM
BD	BOARD	MO	MASONRY OPENING
BM	BEAM	MRGB	MOISTURE RESISTANT GYP BD
C TO C	CENTER TO CENTER	MTL	METAL
CPT	CARPET	OC	ON CENTER
CJ	CONSTRUCTION JOINT	PBO	PROVIDED BY OWNER
CMU	CONCRETE MASONRY UNIT	PL	PLATE
COL	COLUMN	PRE-ENG	PRE-ENGINEERED
CONC	CONCRETE	PLAM	PLASTIC LAMINATE
CONSTR	CONSTRUCTION	PLYWD	PLYWOOD
CONT	CONTINUOUS	PS	PULL STATION
CONTR	CONTRACTOR	PT	PRESSURE TREATED OR PAINT
CT	CERAMIC TILE	PTD	PAINTED
DET	DETAIL	PVC	POLYVINYL CHLORIDE PIPE
DF	DRINKING FOUNTAIN	RESIL	RESILIENT
DS	DOWN SPOUT	RET	RETAINING
DWG	DRAWING	SHT	SHEET
EA	EACH	STL	STEEL
EL	ELEVATION	TEMP	TEMPERATURE
EPS	EXPANDED POLYSTYRENE	T&G	TONGUE AND GROOVE
EQUIP	EQUIPMENT	TOC	TOP OF CONCRETE
EWB	ELECTRIC WATER HEATER	TOF	TOP OF FOOTING
EXP	EXPANSION OR EXPOSED	TOS	TOP OF STEEL
EXT	EXTERIOR	TOW	TOP OF WALL
EXIST	EXISTING	TPH	TOILET PAPER HOLDER
FF	FINISHED FLOOR/FINISH FACE	TYP	TYPICAL
FE	FIRE EXTINGUISHER	VCT	VINYL COMPOSITE TILE FLOORING
FEC	FIRE EXTINGUISHER CABINET	VB	VINYL BASE
FG	FIBERGLASS	W/	WITH
FHC	FIRE HOSE CABINET	WC	WATER CLOSET
FLASH	FLASHING	WD	WOOD
FRP	FIBER-REINFORCED PLASTIC	XPS	WOOD
GA	GAUGE	32°48"	32 DEGREES, 4 MINUTES, 8 SECONDS
GB	GRAB BAR	Ø	DIAMETER
GYP BD	GYP SUM BOARD	@	AT
HDWD	HARDWOOD	&	AND
HT	HIGH OR HEIGHT		
HVAC	HEATING, VENTILATION & AIR CONDITIONING		

### GENERAL NOTES

G1 SCOPE OF WORK: SINGLE STORY 5,000SF NEW BUILDING WITH TWO TENANT SPACES. BUILDING IS WOOD FRAME ON CONCRETE SLAB. THE FIRST TENANT SPACE IS A 3,500SF RESTAURANT, AND THE SECOND TENANT SPACE IS A TOBACCO SHOP WITH A DRIVE THROUGH.

G2 ALL WORK SHALL BE PERFORMED IN ACCORDANCE WITH ALL LOCAL CODES, ORDINANCES, AMENDMENTS, & COVENANTS:

BLOUNT COUNTY  
BLOUNT COUNTY ZONING ORDINANCE  
2018 INTERNATIONAL BUILDING CODE  
2018 INTERNATIONAL ENERGY CONSERVATION CODE  
2018 INTERNATIONAL MECHANICAL CODE  
2018 INTERNATIONAL PLUMBING CODE  
2017 NATIONAL ELECTRIC CODE  
2018 INTERNATIONAL FUEL GAS CODE  
2018 INTERNATIONAL FIRE CODE  
2018 NFPA 101 LIFE SAFETY CODE  
2010 ADA STANDARDS FOR ACCESSIBLE DESIGN

G3 READ (OR CALCULATE) DIMENSIONS FROM PUBLISHED PRINTS OF CONSTRUCTION DRAWINGS. DO NOT "SCALE" FROM DRAWINGS, IN EITHER THEIR PUBLISHED OR ELECTRONIC FORMS.

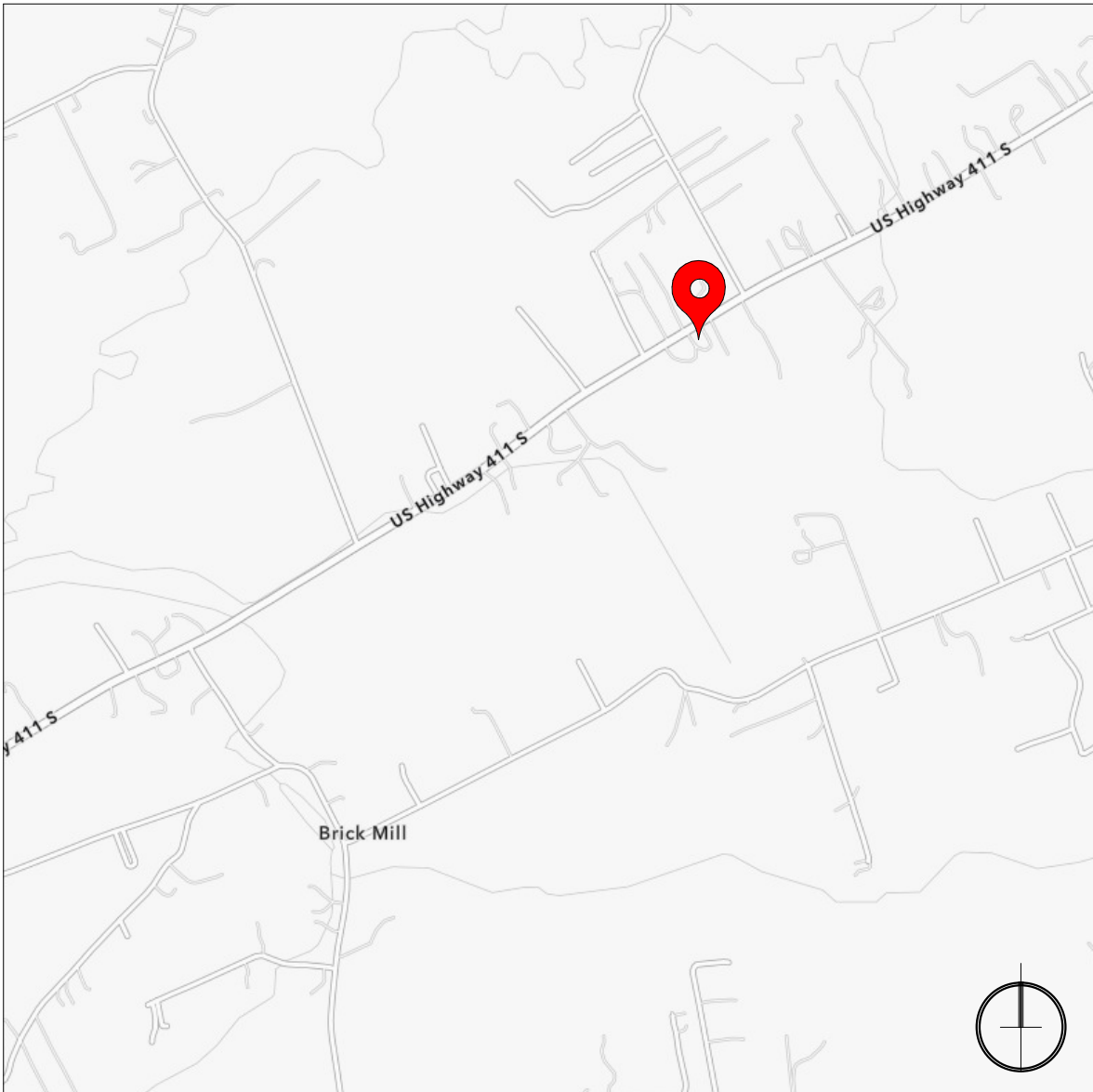
G4 CONTRACTOR SHALL VERIFY EXISTING CONDITIONS & DIMENSIONS BEFORE BEGINNING CONSTRUCTION; ANY DISCREPANCIES MUST BE REPORTED TO OYSK3 ARCHITECTS FOR JUSTIFICATION AND/OR CORRECTION; CONTRACTOR ASSUMES RESPONSIBILITY FOR CONDITIONS THAT ARE NOT REPORTED.

G5 CONTRACTOR SHALL FIELD-VERIFY COMPATIBILITY OF THE BUILDING WITH ALL SITE CONDITIONS; I.E., GRADES, ELEVATIONS, UTILITY LOCATIONS & INVERTS, OTHER EXISTING CONDITIONS, ETC.

G6 ALL FOOTINGS MUST REST ON UNDISTURBED OR SUITABLE, COMPACTED SUBSOIL.

G7 MANUFACTURED TRUSSES, BEAMS, & OTHER ENGINEERED BUILDING SYSTEMS MUST BE DESIGNED BY THE MANUFACTURER'S ENGINEER, WHO SHALL BE REGISTERED IN THE STATE OF TENNESSEE; STAMPED, APPROVED SHOP DRAWINGS SHALL BE ON-SITE BEFORE ERECTION BEGINS.

SHEET INDEX		
SHEET NUMBER	SHEET NAME	SHEET ISSUE DATE
01 - GENERAL		
G000	PROJECT INFORMATION	6/23/2025
04 - CIVIL		
C100	EXISTING CONDITIONS	6/18/2025
C101	EXISTING-DEMO	6/18/2025
C300	GRADING & DRAINAGE PLAN	6/18/2025
C400	UTILITY PLAN	6/18/2025
06 - ARCHITECTURAL		
A100	ARCHITECTURAL SITE PLAN	6/23/2025
A101	LANDSCAPE PLAN	6/23/2025
A102	MAIN FLOOR PLAN	6/23/2025
A201	EXTERIOR ELEVATIONS	6/23/2025
A202	EXTERIOR ELEVATIONS	6/23/2025
07 - ELECTRICAL		
E-1	PHOTOMETRICS	6/19/2025
E-2	PHOTOMETRICS	6/19/2025



1 VICINITY MAP  
G000 N.T.S.

6/23/2025

411 Restaurant & Tobacco Store

Sam Patel

5022 US HWY 411, Maryville, Tennessee, 37801

ISSUE	DATE	ISSUED FOR
	6/23/2025	Zoning Review

DRAWN BY: KG

PROJECT  
INFORMATION

G000

PROJECT : 25091

© COPYRIGHT 2025



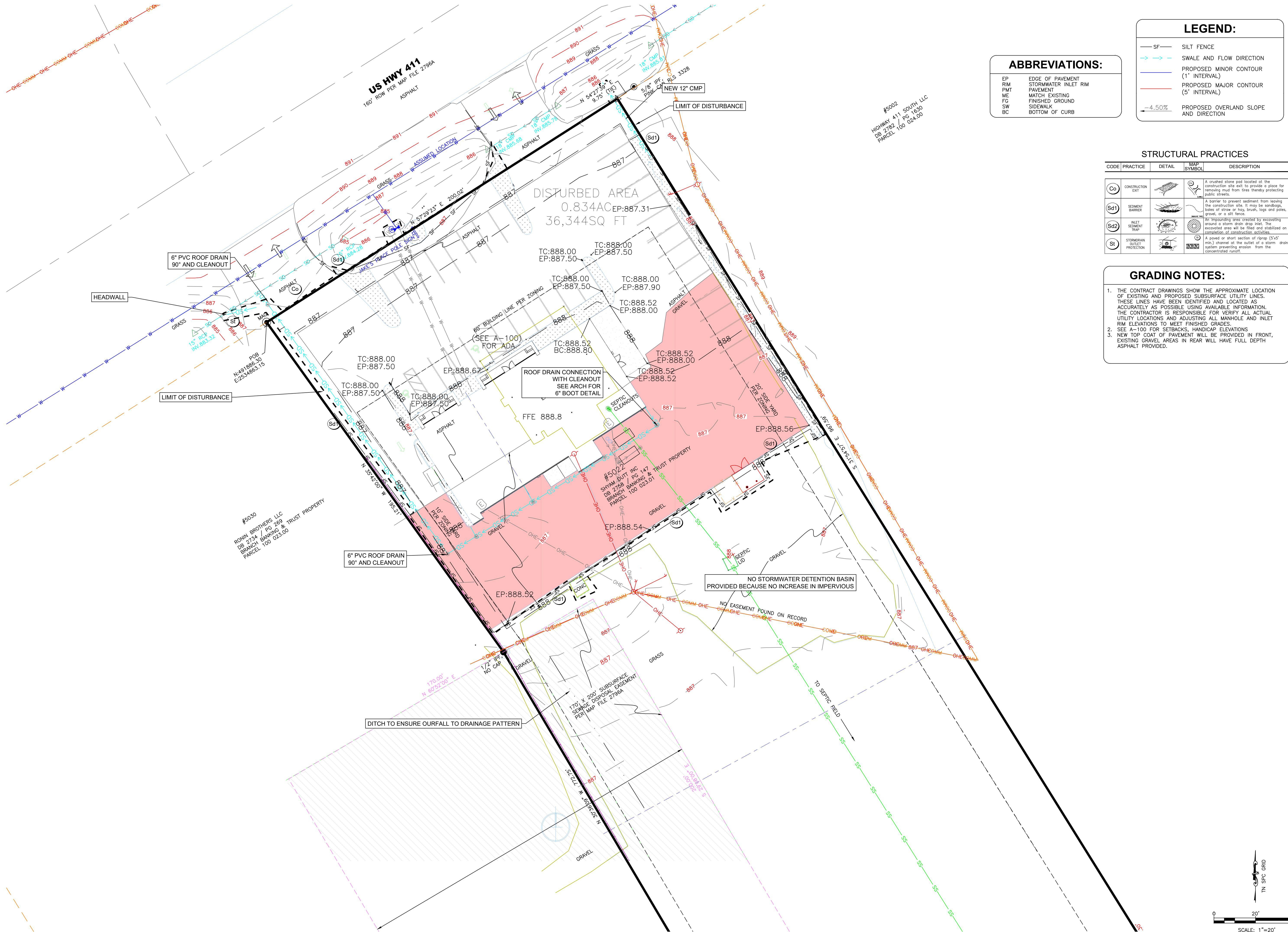








25-043-E- us411 civil V5 AMJ.dwg



ABBREVIATIONS:

EP EDGE OF PAVEMENT  
RIM STORMWATER INLET RIM  
PMT PAVEMENT  
ME MATCH EXISTING  
FG FINISHED GROUND  
SW SIDEWALK  
BC BOTTOM OF CURB

LEGEND:

SF SILT FENCE  
SWALE AND FLOW DIRECTION  
PROPOSED MINOR CONTOUR (1' INTERVAL)  
PROPOSED MAJOR CONTOUR (5' INTERVAL)  
PROPOSED OVERLAND SLOPE AND DIRECTION

STRUCTURAL PRACTICES

CODE	PRACTICE	DETAIL	MAP SYMBOL	DESCRIPTION
Co	CONSTRUCTION EROSION CONTROL			A crushed stone pad located at the construction site exit to provide a place for removing mud from tires thereby protecting public streets.
Sd1	SEDIMENT BARRIER			A barrier to prevent sediment from leaving the construction site. It may be sandbags, bales of straw or hay, brush, logs and poles, gravel, or a silt fence.
Sd2	INLET SEDIMENT TRAP			An impounding area created by excavating around a storm drain drop inlet. The excavated area will be filled and stabilized on completion of construction activities.
SI	STORMWATER OUTLET PROTECTION			A paved or short section of riprap (5\"/>

GRADING NOTES:

- THE CONTRACT DRAWINGS SHOW THE APPROXIMATE LOCATION OF EXISTING AND PROPOSED SUBSURFACE UTILITY LINES. THESE LINES HAVE BEEN IDENTIFIED AND LOCATED AS ACCURATELY AS POSSIBLE USING AVAILABLE INFORMATION. THE CONTRACTOR IS RESPONSIBLE FOR VERIFY ALL ACTUAL UTILITY LOCATIONS AND ADJUSTING ALL MANHOLE AND INLET RM ELEVATIONS TO MEET FINISHED GRADES.
- SEE A-100 FOR SETBACKS, HANDICAP ELEVATIONS
- NEW TOP COAT OF PAVEMENT WILL BE PROVIDED IN FRONT. EXISTING GRAVEL AREAS IN REAR WILL HAVE FULL DEPTH ASPHALT PROVIDED.

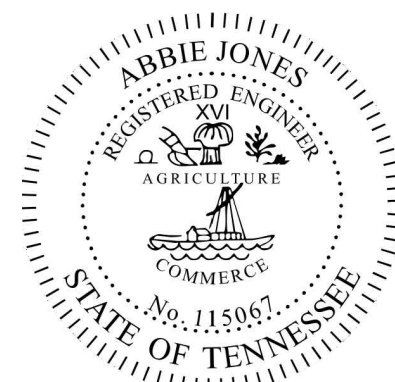
US 411 RESTAURANT & TOBACCO STORE

LOCATED AT: 5022 US 411 SOUTH, MARYVILLE, TN 37051

CLIENT/TOWNER: SAM PATEL, 5022 US 411 SOUTH, MARYVILLE, TN 37801

REVISIONS

REV #	DESCRIPTION	DATE



DRAWN BY: JBH  
CHECKED BY: JAF  
APPROVED BY: AMJ  
PROJECT: 2025-043  
DATE: 6/16/2025  
ZONE/PLAN SUBMITTAL: 6/18/2025

CONCEPT SET  
NOT FOR  
CONSTRUCTION

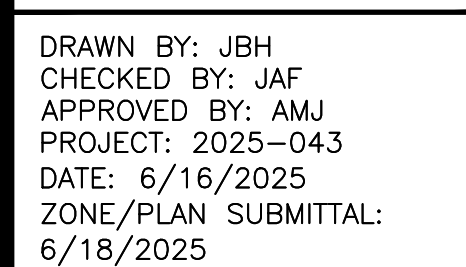
GRADING &  
DRAINAGE PLAN

C-300



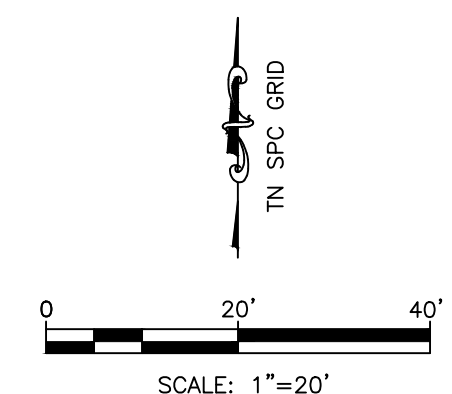
**Abbie Jones**  
consulting

ABBIE JONES CONSULTING  
1022 FONTAINE ROAD  
LEXINGTON, KY 40502  
WWW.ABBIE-JONES.COM  
859.559.3443



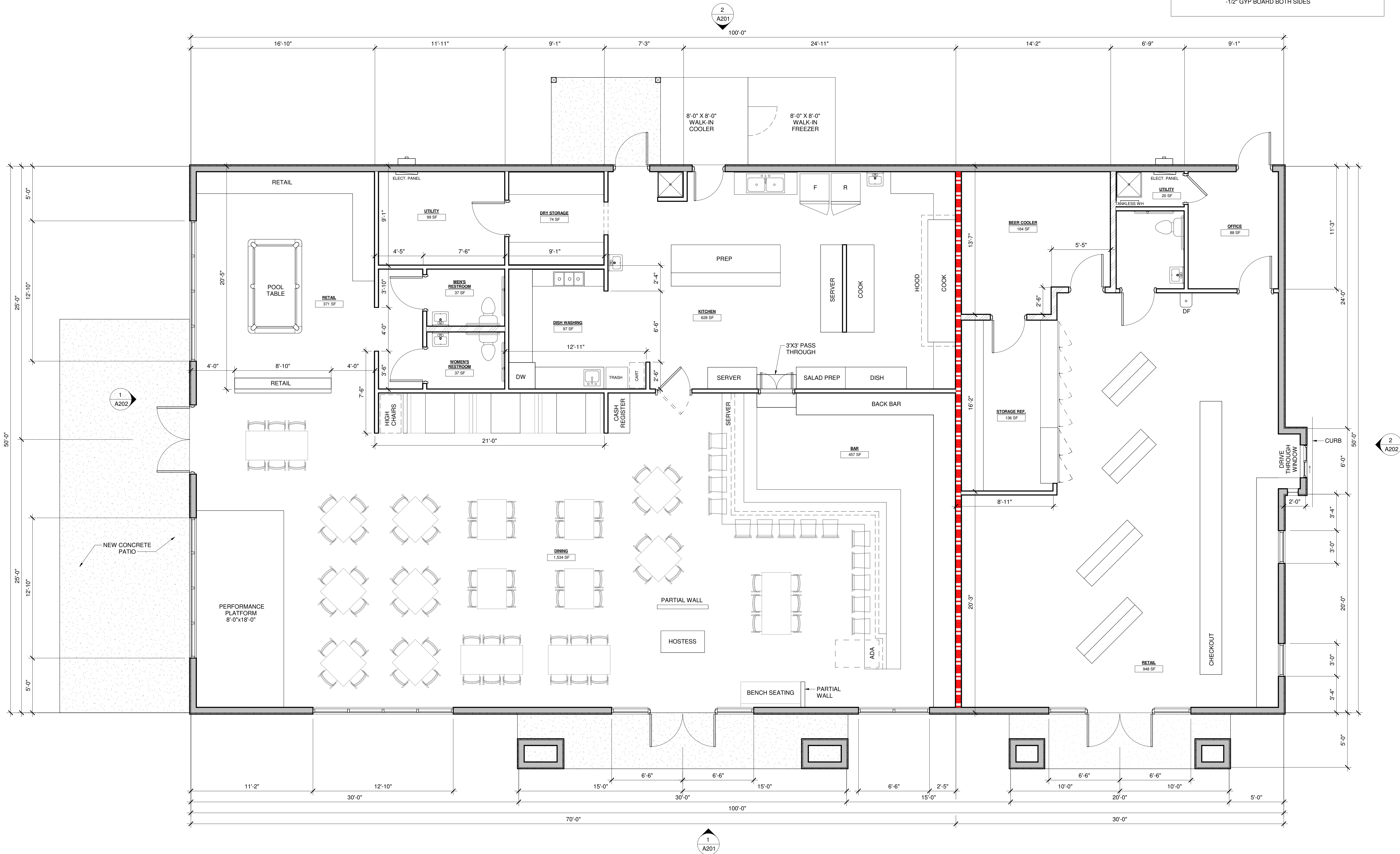
## UTILITY PLAN

**C-400**

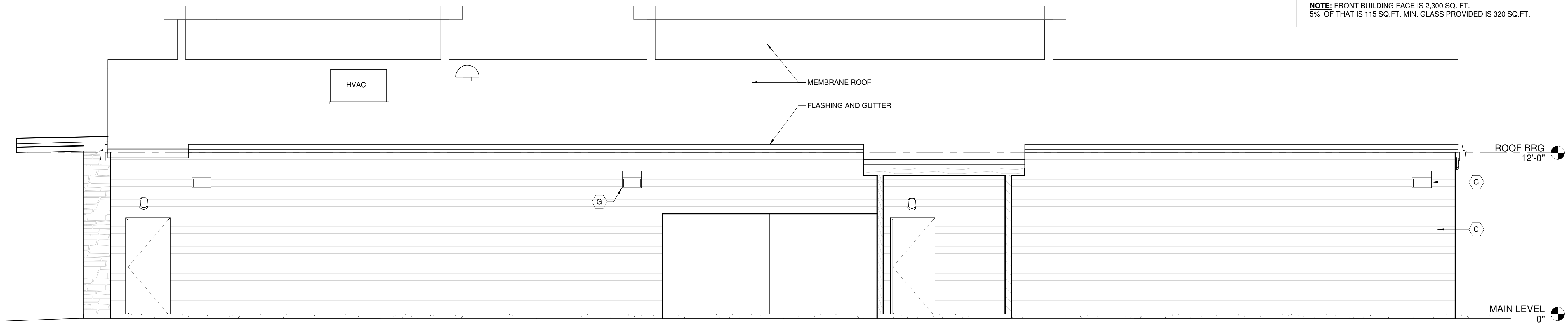




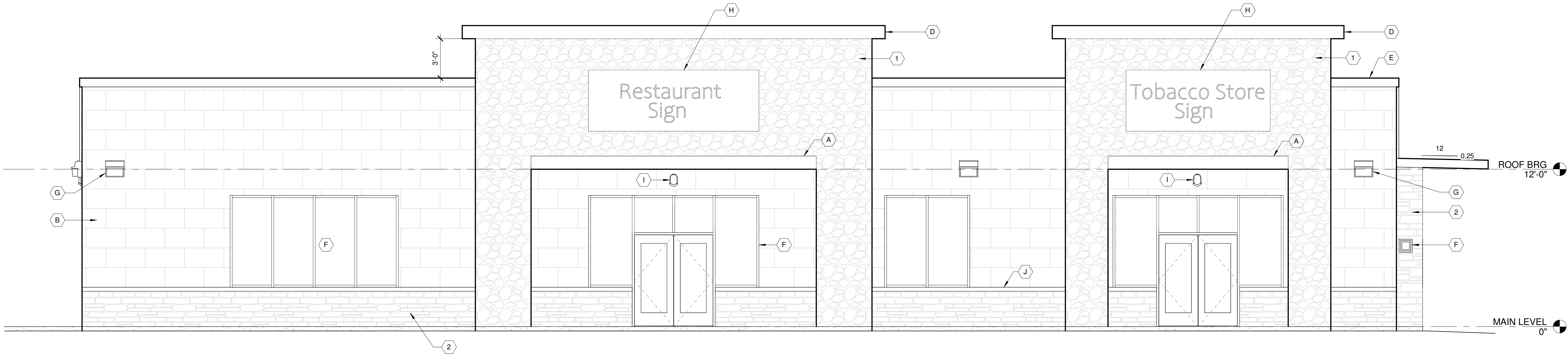
6/23/2025 9:45:25 AM  
V:\444-Project\Current Projects\25091 Sam's Restaurant - Tobacco Shop\01 Current Drawings\25091 411 Restaurant & Tobacco Shop.dwg



6/23/2025 9:45:52 AM  
V:\444-Project\Current Projects\25091 Sam's Restaurant - Tobacco Store\01 Current Drawings\25091 411 Restaurant & Tobacco Store.rvt



2 REAR ELEVATION  
A201 1/4" = 1'-0"



1 FRONT ELEVATION  
A201 1/4" = 1'-0"

ELEVATION KEYNOTES	
A	STEEL C-CHANNEL COLOR: MATTE MEDIUM BRONZE
B	NICHIHA CEMENT PANEL COLOR: GENTLE GRAY OR DESERT BEIGE
C	HORIZONTAL SIZING
D	METAL CAP COLOR: BLACK
E	METAL TRIM / FLASHING
F	ALUMINIUM STOREFRONT
G	WALL PACK
H	SIGN TO BE INTERNALLY LIT (TOTAL BUILDING SIGN MAX. 100 SQ. FT.
I	EMERGENCY LIGHT WITH BATTERY BACKUP
J	SIMULATED STONE ROWLOCK
1	CORONADO STONE VENEER COLOR: TUSCAN VILLA, PRAIRIE MOSS
2	CORONADO STONE - QUICK STACK, DRY STACK COLOR: CAPE COD GREY
<b>NOTE:</b> FRONT BUILDING FACE IS 2,300 SQ. FT. 5% OF THAT IS 115 SQ.FT. MIN. GLASS PROVIDED IS 320 SQ.FT.	



6/23/2025

411 Restaurant & Tobacco Store  
Sam Patel  
5022 US HWY 411, Maryville, Tennessee, 37801

ISSUE	DATE	ISSUED FOR
1	6/23/2025	Zoning Review

DRAWN BY: KG

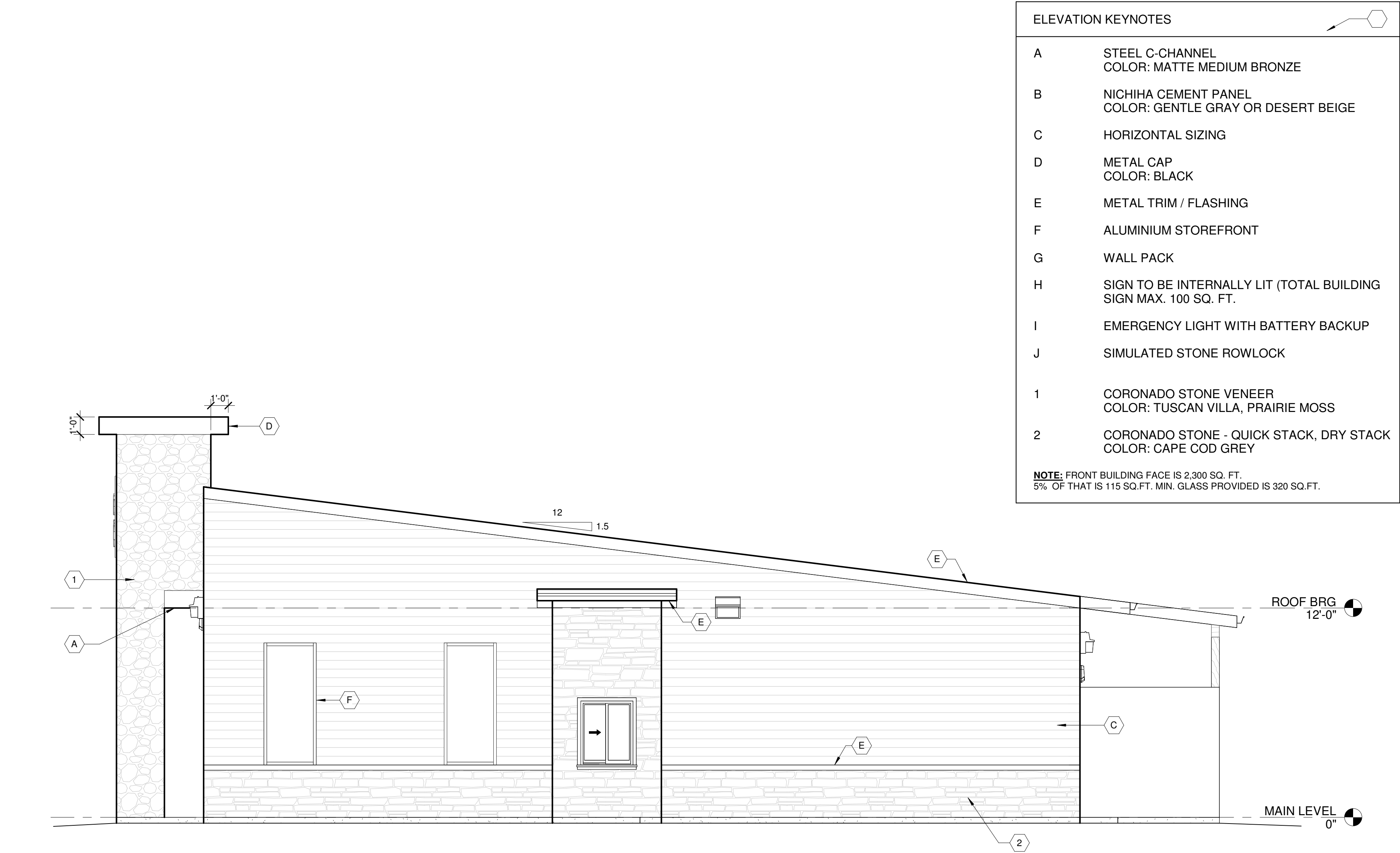
EXTERIOR  
ELEVATIONS

A201

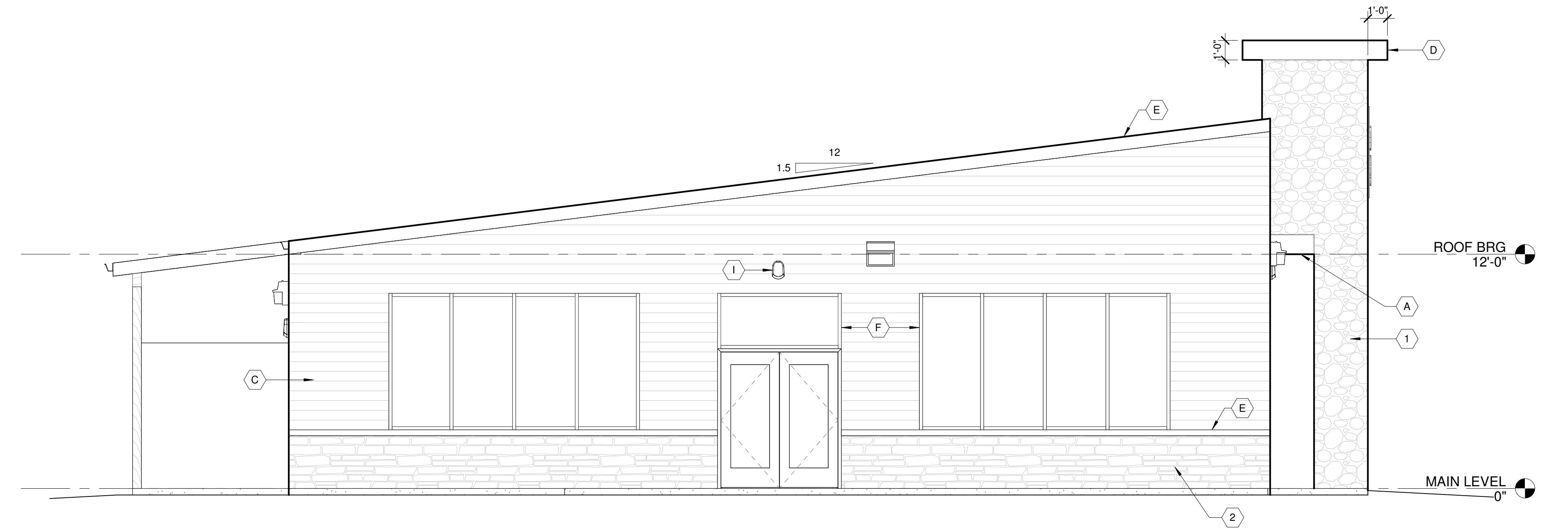
PROJECT : 25091

© COPYRIGHT 2025





2 RIGHT ELEVATION  
A202 1/4" = 1'-0"

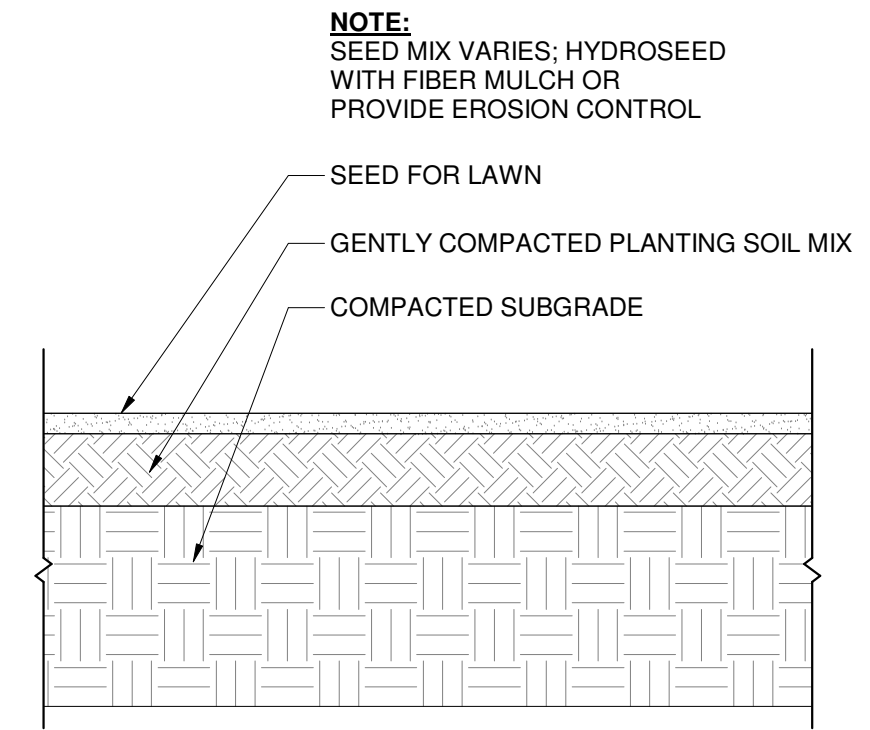


1 LEFT ELEVATION  
A202 1/4" = 1'-0"

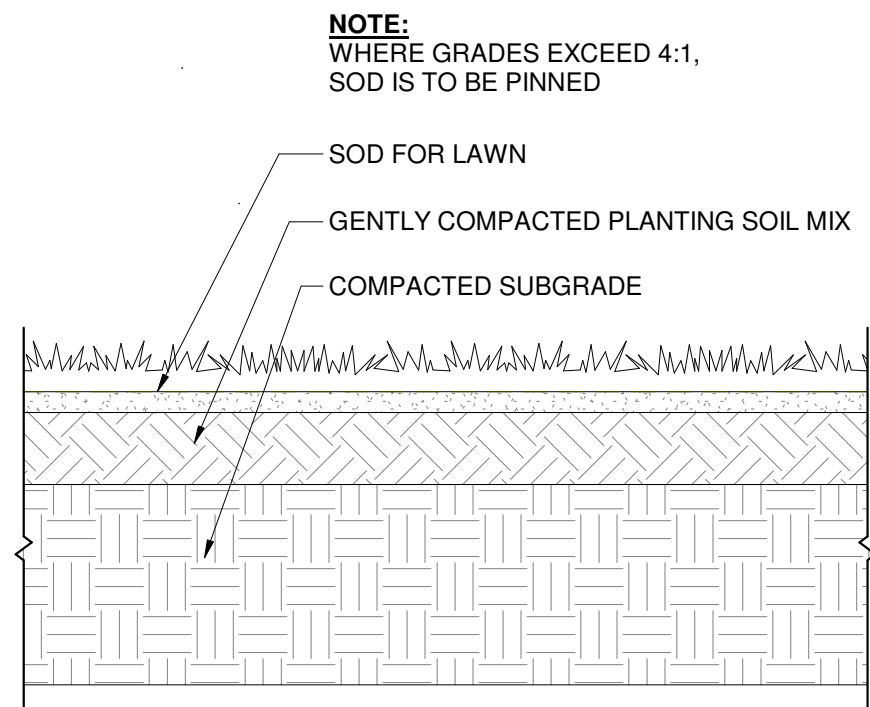




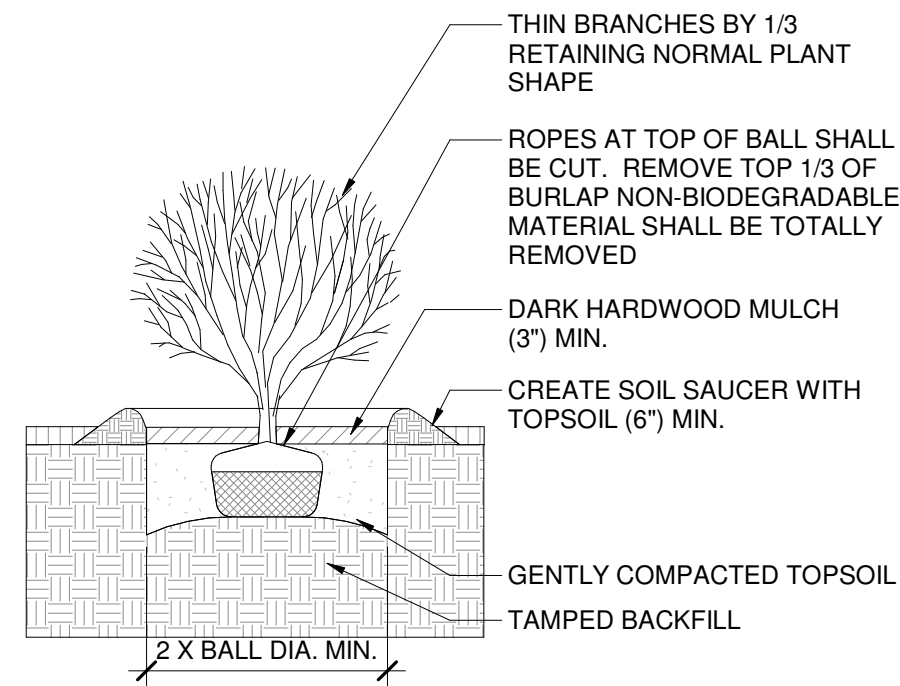




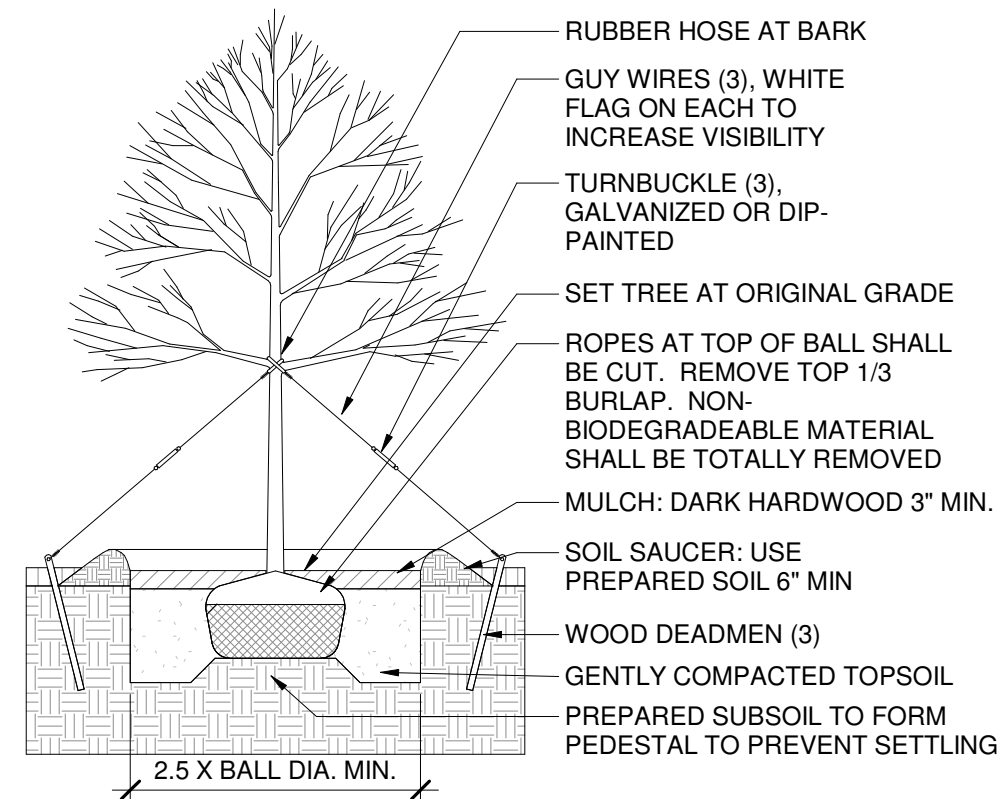
7 SEED DETAIL  
A101 1/2" = 1'-0"



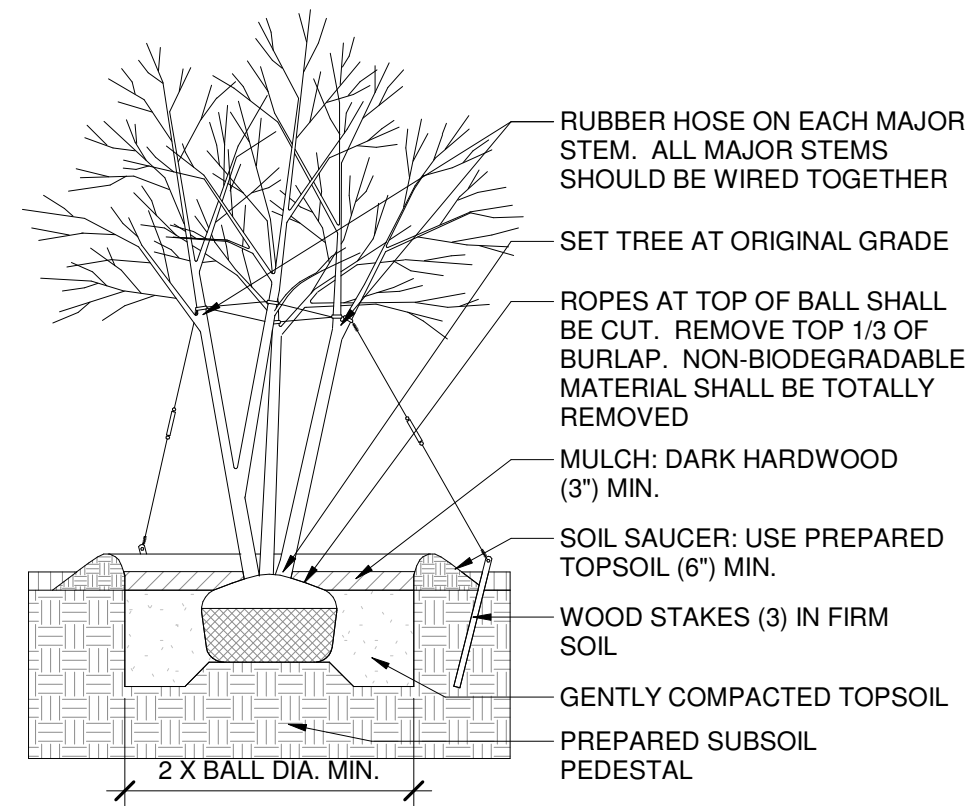
6 SOD DETAIL  
A101 1/2" = 1'-0"



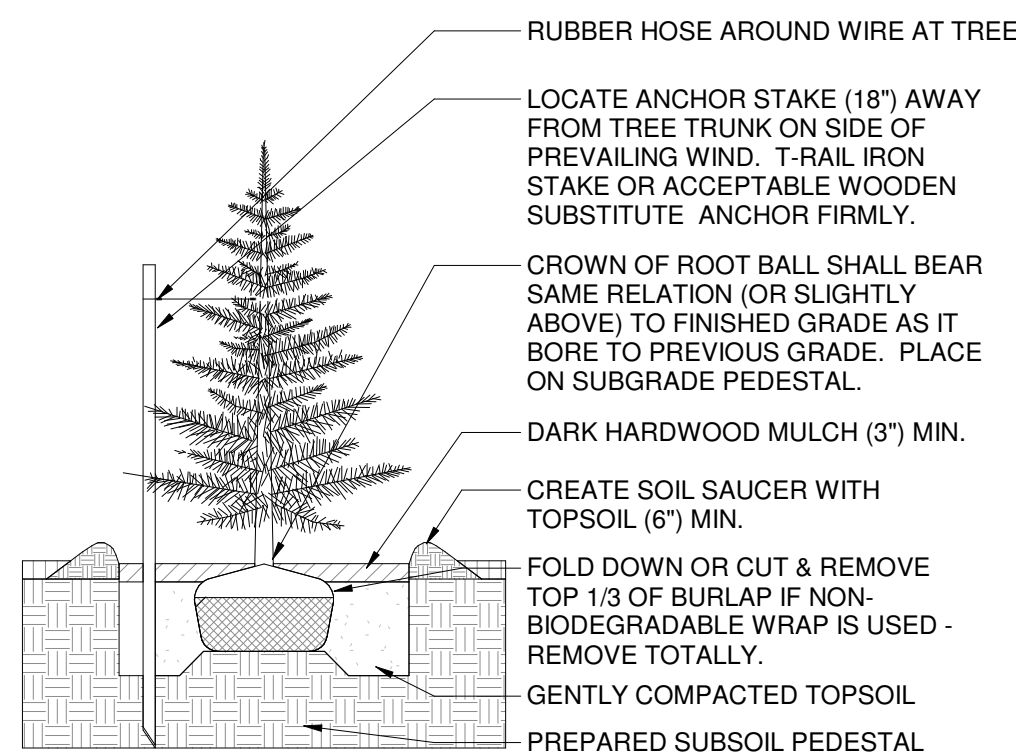
5 SHRUB PLANTING DETAIL  
A101 N.T.S.



3 DECIDUOUS TREE PLANTING DETAIL  
A101 N.T.S.



4 MULTI-STEM TREE PLANTING DETAIL  
A101 N.T.S.

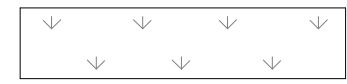


2 CONIFEROUS TREE PLANTING DETAIL  
A101 N.T.S.

US HWY 411



LANDSCAPE LEGEND



LANDSCAPE AREA -  
(PERENNIALS PER OWNER,  
GROUND, COVER, VINES,  
SMALL BUSHES, TREES, OR  
GRASS - AS INDICATED)



MEDIUM EVERGREEN TREE



SMALL DECIDUOUS TREE



BUSH



EXISTING TREES

**NOTE:**  
ALTERNATE PLANS AND OTHER APPROVED BUSHES MAY  
BE PROPOSED BY LANDSCAPER. THEY MUST BE  
APPROVED BY JURISDICTION. PROVIDE SHOP DRAWINGS  
FOR APPROVAL.

LANDSCAPE PLAN NOTES:

L1 ALL GROUND DISTURBED BY  
CONSTRUCTION SHALL BE  
REPAIRED/REPLACED WITH TOPSOIL;  
THIS SHALL BE GRADED, RAKED,  
SEEDED, MULCHED, & WATERED PER  
SPECIFICATIONS, UNLESS OTHER  
LANDSCAPING IS INDICATED.

L2 ALL TREES RETAINED OR PROVIDED  
TO MEET THE REQUIREMENTS OF THE  
JURISDICTION SHALL BE PROPERLY  
MAINTAINED TO ENSURE THEIR  
SURVIVAL. RESERVE EXISTING TREES  
WHERE FEASIBLE. PROVIDE PROTECTIVE  
BARRIER FOR PRESERVED TREES.

L3 BETWEEN PARKING LOT &  
RESIDENTIAL ZONES, PROVIDE  
PERIMETER SCREENING CONTINUOUS  
LANDSCAPE (50% EVERGREEN SHRUBS).

L4 PARKING LOT ISLANDS SHALL BE  
MINIMUM OF 120 SQ. FT. PERVIOUS  
PLANTED AREA WITH (1) DECIDUOUS  
TREE, MINIMUM 2" CALIPER & 8'-0" TALL.  
AREA SHALL BE PLANTED WITH VINES,  
SHRUBS, GRASS, OR GROUND COVER.

LANDSCAPE PLANTS:

LARGE TREES:

- 1 RED MAPLE
- 2 CHESTNUT OAK

MEDIUM TREES:

- 5 COLORADO BLUE SPRUCE
- 6 LACE BARK ELM

SMALL TREES:

- 10 JAPANESE MAPLE
- 11 EASTERN RED BUD
- 12 CREPE MYRTLE
- 13 FLOWER DOGWOOD

BUSHES ETC:

- 16 EMILY BRUNER HOLLY (SCREEN/BUFFER)
- 20 VIRGINIA SWEETSPIRE
- 21 BARBERRY
- 22 CRIMSON PYGMY
- 23 DWARF YAUPON HOLLY

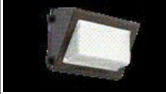
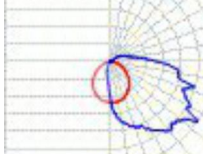
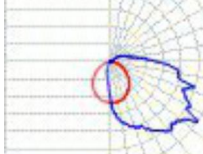
PLANTING BEDS:

- 25 MONDO GRASS, OPHIOPOGON
- 26 JUNIPER BAR HARBOR JUNIPERUS WILTONII

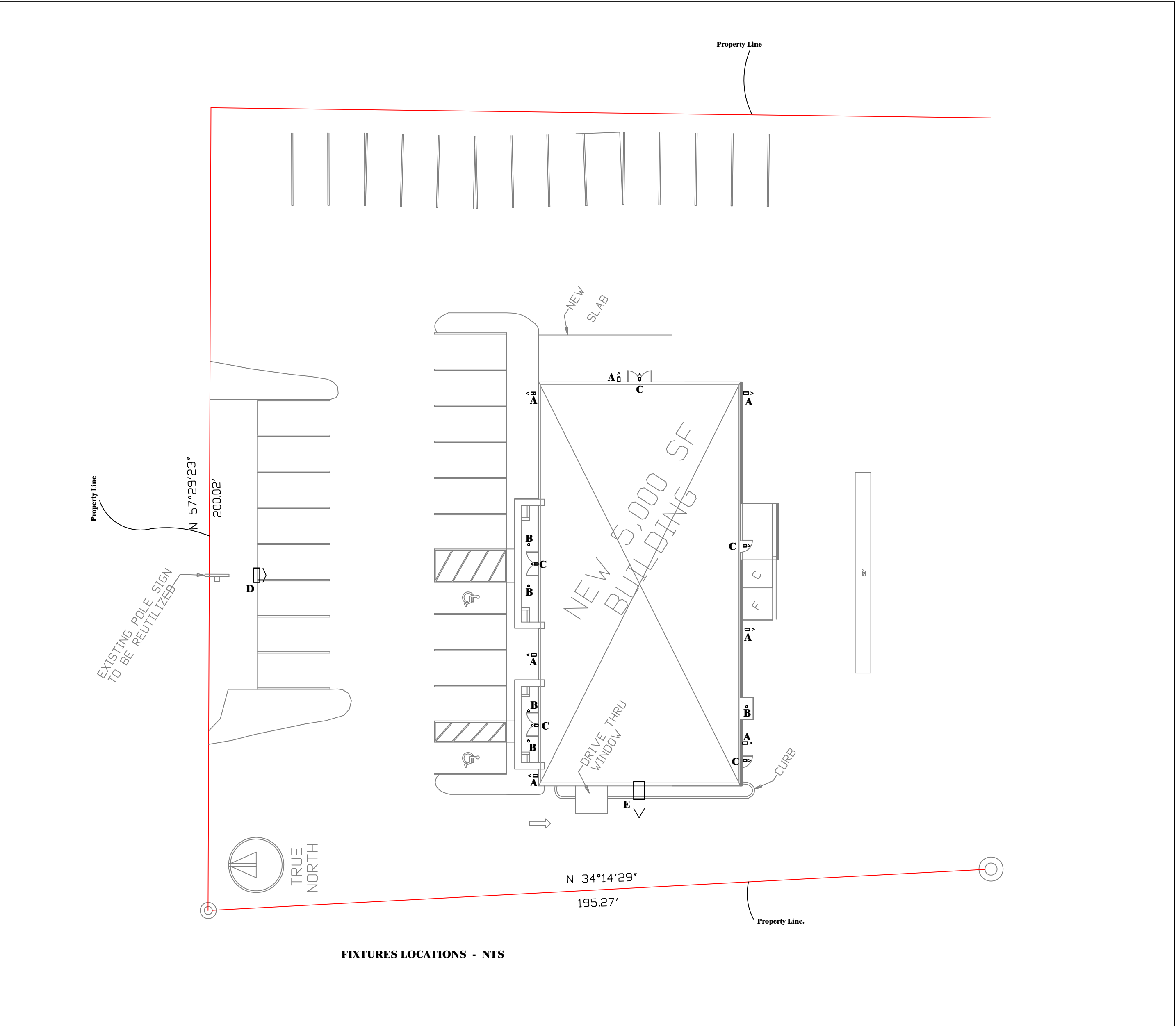






<div><div>^</div><div>□</div><div>A</div></div>	82 Watt Sec		7	Lithonia Lighting	TWR2 LED ALO-MED 40K UVOLT	1	12449	1	TWR2 LED, Medium Lumen Setting, 4000K Setting, 120-347V	82.1	 Max: 5507cd
<div><div>○</div><div>B</div></div>	Can - 15W		5	Aculux	AX2 D G2 12LM 30K 80CRI 15D 2DPIN BD	1	1024	1	2" ROUND DOWNLIGHT ACULUX 15W LED, SPOT OPTIC	14.86	 Max: 9929cd
<div><div>^</div><div>□</div><div>C</div></div>	Egress - 16 W		5	Lithonia Lighting	TWR1 LED ALO-LOW 50K UVOLT	1	2359	1	TWR1 LED, Low Lumen Setting, 5000K Setting, 120-347V	16	 Max: 1138cd
<div><div>⬜</div><div>D</div></div>	Flood 39W		1	American Electric Lighting	75LED P10 XXXXX 55 4K FV	1	Absolute	1	75LED Floodlight P10 package 5x5 4000K CCT	39	 Max: 4355cd
<div><div>^</div><div>□</div><div>E</div></div>	16W Sec		1	Lithonia Lighting	TWR1 LED ALO-LOW 50K UVOLT	1	2359	1	TWR1 LED, Low Lumen Setting, 5000K Setting, 120-347V	16	 Max: 1138cd

- Notes**  
1.Fixtures A and E are located 12 feet above grade level.  
2.Fixtures B and C are located 8 feet above grade level.  
3. Fixture D is located near ground level.  
4. This layout was produced using Visual Lighting 2020 Ver. (2.11.0094).



1

E-2

FIXTURE DETAIL

1/8" = 1' - 0"

ISSUE

DATE

ISSUED FOR

A

June 19, 2025

Site Lighting Lumen plan

Design BY: HWH

E - 2

Photometrics

PROJECT : 25091

© COPYRIGHT 2025

411 Restaurant & Tobacco Store

Sam Patel

5022 US HWY 411, Maryville, Tennessee, 37801

oy

sk

3

architects

1545 Western Avenue, Suite 105  
Knoxville, TN 37921  
(865) 523-5200  
office@oyysk3architects.com

06/19/25

STATE OF TENNESSEE

NO. 015597

EXPIRES

06/19/26