

RESOLUTION NO. 26-05-012

SPONSORED BY: Commissioners Rick Carver and David Wells

A RESOLUTION TO AMEND THE ZONING MAP OF BLOUNT COUNTY TENNESSEE, from R-1(Rural District 1) to RAC (Rural Arterial Commercial District) for a 3.758 acre portion of a 5.069 acre tract of land located 4750 E Lamar Alexander Pkwy, Blount County, TN (Tax map 060, parcel 182.16).

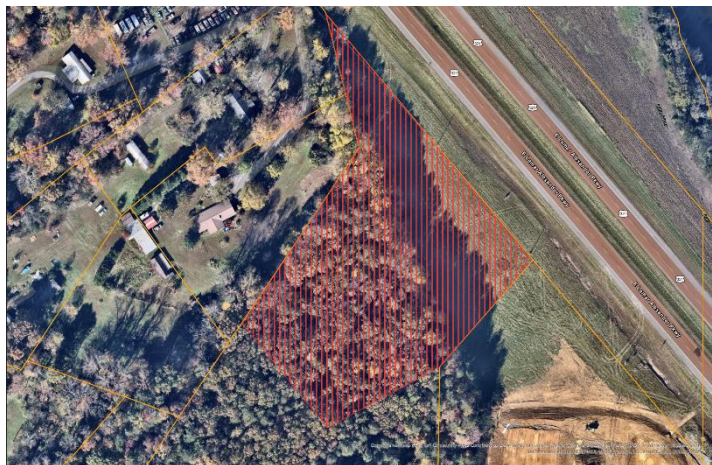
WHEREAS, the legislature of the State of Tennessee has enabled Blount County to adopt and amend zoning regulations, including a zoning map, in Tennessee Code Annotated Section 13-7-101, et seq., and

WHEREAS, the Board of Commissioners of Blount County, Tennessee adopted zoning regulations, including the Zoning Map of Blount County, Tennessee in Resolution 00-06-010 **A RESOLUTION ADOPTING ZONING IN BLOUNT COUNTY PURSUANT TO SECTIONS 13-7- 101, et seq., OF THE TENNESSEE CODE ANNOTATED,** and

WHEREAS, it is desired to amend the Zoning Map of Blount County, Tennessee, and

WHEREAS, the Blount County Regional Planning Commission met in regular session on February 26, 2026, and voted (7-1) to forward to the County Commission with a recommendation for approval of the following amendment to the zoning regulations; and

NOW, THEREFORE, BE IT RESOLVED by the Legislative Body of Blount County, Tennessee, assembled in regular session on this 21st day of May 2026, to adopt the following:



That the Zoning Map of Blount County, Tennessee, be amended by rezoning land from R-1 (Rural District 1) to RAC (Rural Arterial Commercial) for a 3.758 acre portion of a 5.069 acre tract of land located 4750 E Lamar Alexander Pkwy, Blount County, TN. The property is identified as part of tax map 060, parcel 182.16 (the portion to be rezoned is shown in red above).

BE IT FURTHER RESOLVED, that THAT THIS RESOLUTION SHALL BE IN FORCE AND BECOME EFFECTIVE UPON ITS ADOPTION, THE PUBLIC WELFARE REQUIRING IT.

Duly authorized and approved the 21st of May 2026.

CERTIFICATION OF ACTION

ATTEST

Commission Chairman

County Clerk

County Mayor

Date

- Approved
- Vetoed