

RESOLUTION NO. ___-___-___

SPONSORED BY: Commissioners _____ and _____

A RESOLUTION TO AMEND THE ZONING MAP OF BLOUNT COUNTY TENNESSEE, from S (Suburbanizing) to C (Commercial) for a 19.345 acre portion of a 34.832 acre parcel located at 3652 U.S. Highway 411S. The property is identified as tax map 090 parcel 018.00.

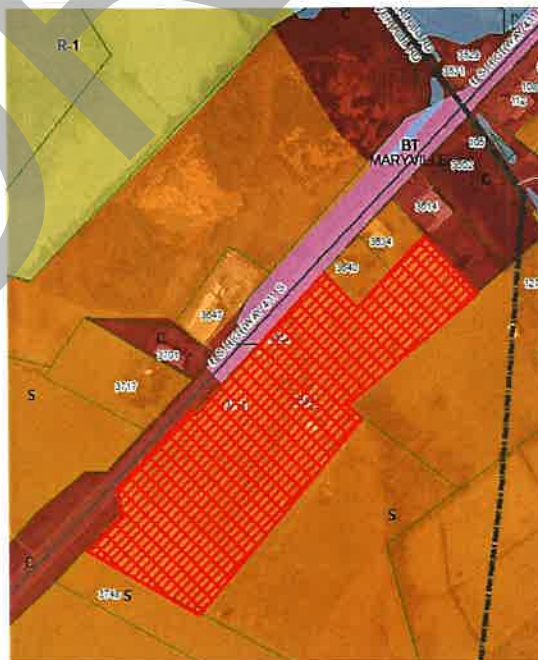
WHEREAS, the legislature of the State of Tennessee has enabled Blount County to adopt and amend zoning regulations, including a zoning map, in Tennessee Code Annotated Section 13-7-101, et seq., and

WHEREAS, the Board of Commissioners of Blount County, Tennessee adopted zoning regulations, including the Zoning Map of Blount County, Tennessee in Resolution 00-06-010 **A RESOLUTION ADOPTING ZONING IN BLOUNT COUNTY PURSUANT TO SECTIONS 13-7- 101, et seq., OF THE TENNESSEE CODE ANNOTATED,** and

WHEREAS, it is desired to amend the Zoning Map of Blount County, Tennessee, and

WHEREAS, the Blount County Regional Planning Commission met in regular session on December 2, 2024, and voted unanimously (9-0) with one abstention to forward to the County Commission with a recommendation for approval of the following amendment to the zoning regulations; and

NOW, THEREFORE, BE IT RESOLVED by the Legislative Body of Blount County, Tennessee, assembled in regular session on this _____ day of _____ 20___, to adopt the following:



That the Zoning Map of Blount County, Tennessee, be amended by rezoning land from S (Suburbanizing) to C (Commercial) for a 19.345 acre portion of a 34.832 acre parcel located at 3652 U.S. Highway 411S. The property is identified as tax map 090 parcel 018.00.. The property is identified as part of tax map 100 parcel 009.02. (the portion to be rezoned is shown hatched in red above).

BE IT FURTHER RESOLVED, that THAT THIS RESOLUTION SHALL BE IN FORCE AND BECOME EFFECTIVE UPON ITS ADOPTION, THE PUBLIC WELFARE REQUIRING IT.

Duly authorized and approved the ____ of _____ 20__.

CERTIFICATION OF ACTION

ATTEST

Commission Chairman

County Clerk

County Mayor

Date

- Approved
- Vetoed

DRAFT